

TASK FORCE MT. PRINCESS EMPRESS OIL SPILL INCIDENT

SITUATIONAL REPORT NO. 36

ANNEX: WATER AND AIR QUALITY ASSESSMENT BREAKDOWN AND MAPS

02 May 2023

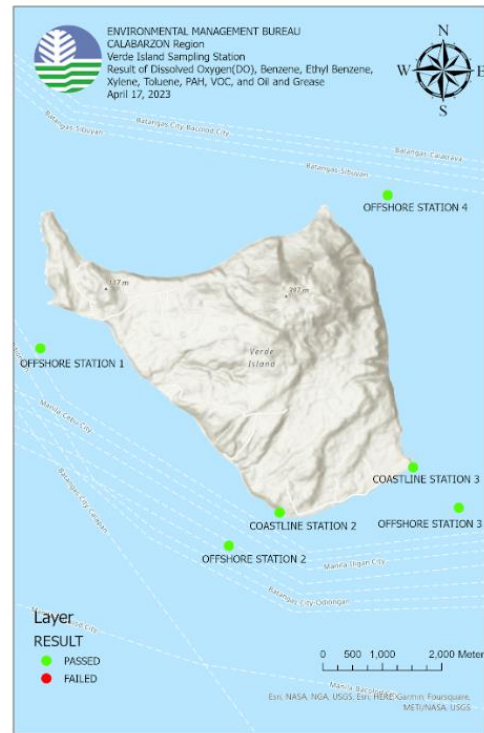
Sources: DENR EMB and Regional Offices

Note: All data are operational in nature and subject to further validation.

Water Quality Results for Region 4A

Province	City/Municipality	Stations	X	Y	Water Quality Sampling Result for Oil and	(WQG) for Oil and Grease	Water Quality Sampling Result for Dissolved	(WQG) for Dissolved	Sampling Result for Benzene (mg/L)	Water Quality Guidelines (WQG) for Benzene (mg/L)	Water Quality Sampling Result for EthylBenzene (mg/L)	Water Quality Guidelines (WQG) for EthylBenzene (mg/L)	Sampling Result for m/p-Xylene (mg/L)	(WQG) for m/p-Xylene (mg/L)
					Grease (mg/L)	(mg/L)	Oxygen (mg/L)	Oxygen (mg/L)						
Batangas	Batangas City	Coastline 2	121.1	13.53	1	2	7.40	6.00	<0.0012	0.01	<0.0011	0.2	<0.0019	0.5
	Batangas City	Coastline 3	121.1	13.53	<1	2	8.10	6.00	<0.0012	0.01	<0.0011	0.2	<0.0019	0.5
	Batangas City	Offshore 1	121	13.55	<1	2	6.60	6.00	<0.0012	0.01	<0.0011	0.2	<0.0019	0.5
	Batangas City	Offshore 2	121.1	13.52	1	2	6.80	6.00	<0.0012	0.01	<0.0011	0.2	<0.0019	0.5
	Batangas City	Offshore 3	121.1	13.53	2	2	7.00	6.00	<0.0012	0.01	<0.0011	0.2	<0.0019	0.5
	Batangas City	Offshore 4	121.1	13.58	2	2	7.40	6.00	<0.0012	0.01	<0.0011	0.2	<0.0019	0.5

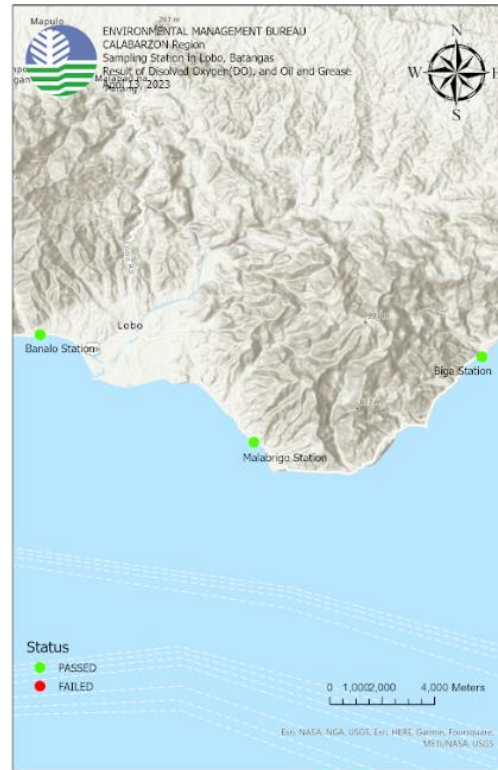
Province	City/Municipality	Stations	X	Y	Water Quality Sampling Result for o-Xylene(mg/L)	(WQG) for o-Xylene (mg/L)	Result for Toluene (mg/L)	(WQG) for Toluene (mg/L)	Water Quality Sampling Result for PAH (mg/L)	(WQG) for PAH (mg/L)	Water Quality Sampling Result for VOC (mg/L)	(WQG) for VOC (mg/L)		
Batangas	Batangas City	Coastline 2	121.1	13.53	<0.001	0.5	<0.001	1	Not Detected	N/A	Not Detected	N/A		
Batangas	Batangas City	Coastline 3	121.1	13.53	<0.001	0.5	<0.001	1	Not Detected	N/A	Not Detected	N/A		
Batangas	Batangas City	Offshore 1	121	13.55	<0.001	0.5	<0.001	1	Not Detected	N/A	Not Detected	N/A		
Batangas	Batangas City	Offshore 2	121.1	13.52	<0.001	0.5	<0.001	1	Not Detected	N/A	Not Detected	N/A		
Batangas	Batangas City	Offshore 3	121.1	13.53	<0.001	0.5	<0.001	1	Not Detected	N/A	Not Detected	N/A		
Batangas	Batangas City	Offshore 4	121.1	13.58	<0.001	0.5	<0.001	1	Not Detected	N/A	Not Detected	N/A		



Water Quality Monitoring in Verde Island, Batangas, Region IVA



Water Quality Monitoring in Tingloy, Maricaban Island, Region IVA

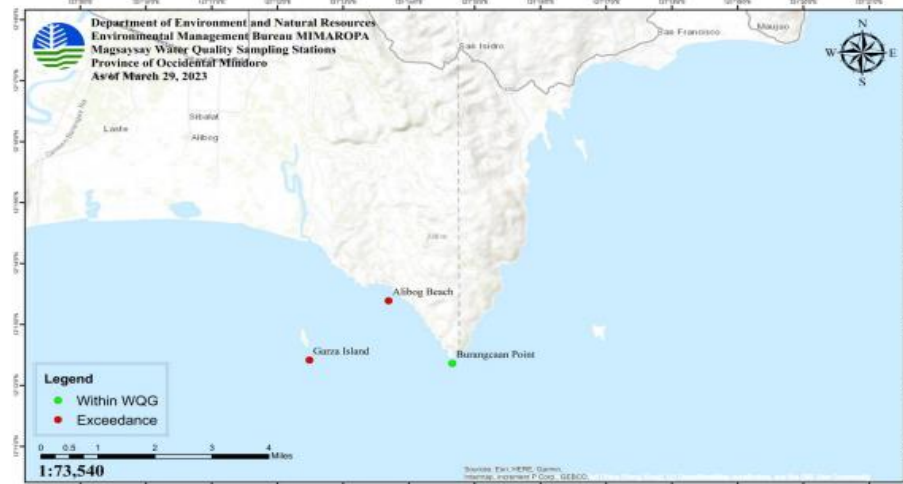


Water Quality Monitoring in Lobo, Batangas, Region IVA



Water Quality Monitoring in Mabini, Batangas, Region IVA

SAMPLING STATIONS AND RESULTS OF ANALYSIS – MAGSAYSAY, OCCIDENTAL MINDORO



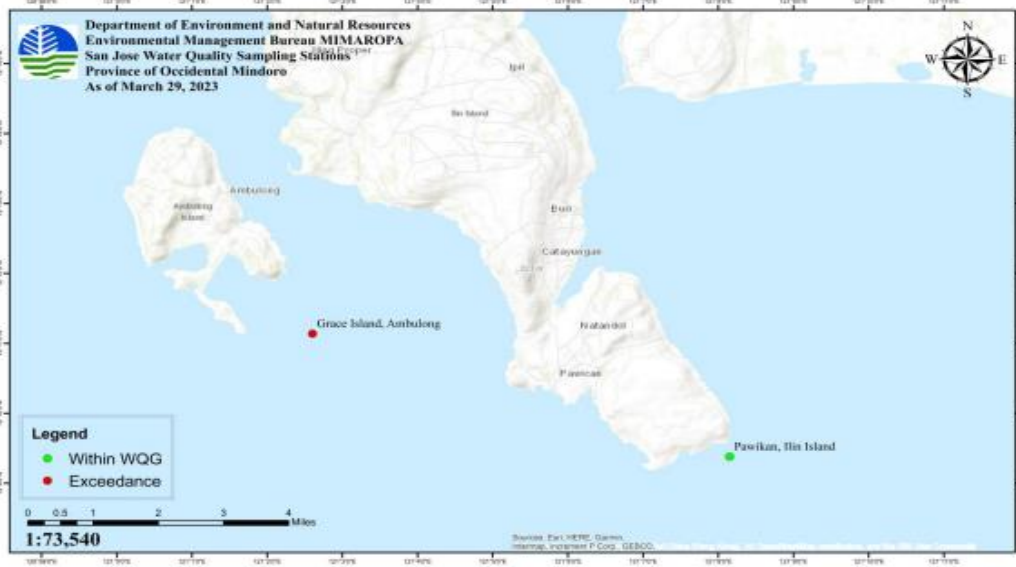
Page | 2

SAMPLING STATIONS AND RESULTS OF ANALYSIS – MAGSAYSAY, OCCIDENTAL MINDORO (MARCH 15 TO 29, 2023)

Source	Station No.	Station Identification	Classification	Current Beneficial Usage	WQG	Date of Sampling		
						March 15, 2023	March 23, 2023	March 29, 2023
Magsaysay, Occidental Mindoro	1	Burangcaan Point	Class SB	swimming, fishing, tourist area, docking of boat, residential area (20-30 meters away from the beach)	2 mg/L	10 mg/L	4 mg/L	2 mg/L
	2	Alibog Beach	Class SB	swimming, fishing, tourist area, docking of boat, residential area (20-30 meters away from the	2 mg/L	7 mg/L	51 mg/L	6 mg/L

				beach)				
	3	Garza Island	Class SB	swimming, fishing, tourist area, docking of boat, residential area (20-30 meters away from the beach)	2 mg/L	9 mg/L	7 mg/L	7 mg/L

SAMPLING STATIONS AND RESULTS OF ANALYSIS – SAN JOSE, OCCIDENTAL MINDORO



SAMPLING STATIONS AND RESULTS OF ANALYSIS – SAN JOSE, OCCIDENTAL MINDORO (MARCH 15 TO 29, 2023)

Source	Station No.	Station Identification	Classification	Current Beneficial Usage	WQG	Date of Sampling		
						March 15, 2023	March 23, 2023	March 29, 2023
San Jose, Occidental Mindoro	1	Pawikan, Ilin Island	Class SD	-	5 mg/L	6 mg/L	3 mg/L	5 mg/L
	2	Grace Island, Ambulong	Class SB	swimming, fishing, tourist area, docking of boat, residential area (20-30 meters away from the beach)	2 mg/L	18 mg/L	1 mg/L	12 mg/L

SAMPLING STATIONS AND RESULTS OF ANALYSIS – BACO, ORIENTAL MINDORO



SAMPLING STATIONS AND RESULTS OF ANALYSIS – BACO, ORIENTAL MINDORO (MARCH 16 TO 31, 2023)

Source	Station No.	Station Identification	Classification	Current Beneficial Usage	WQG	Date of Sampling		
						March 16, 2023	March 24, 2023	March 31, 2023
Baco, Oriental Mindoro	1	Baco Fish Sanctuary	Class SA	Fish sanctuary	1 mg/L	<1 mg/L	18 mg/L	2 mg/L

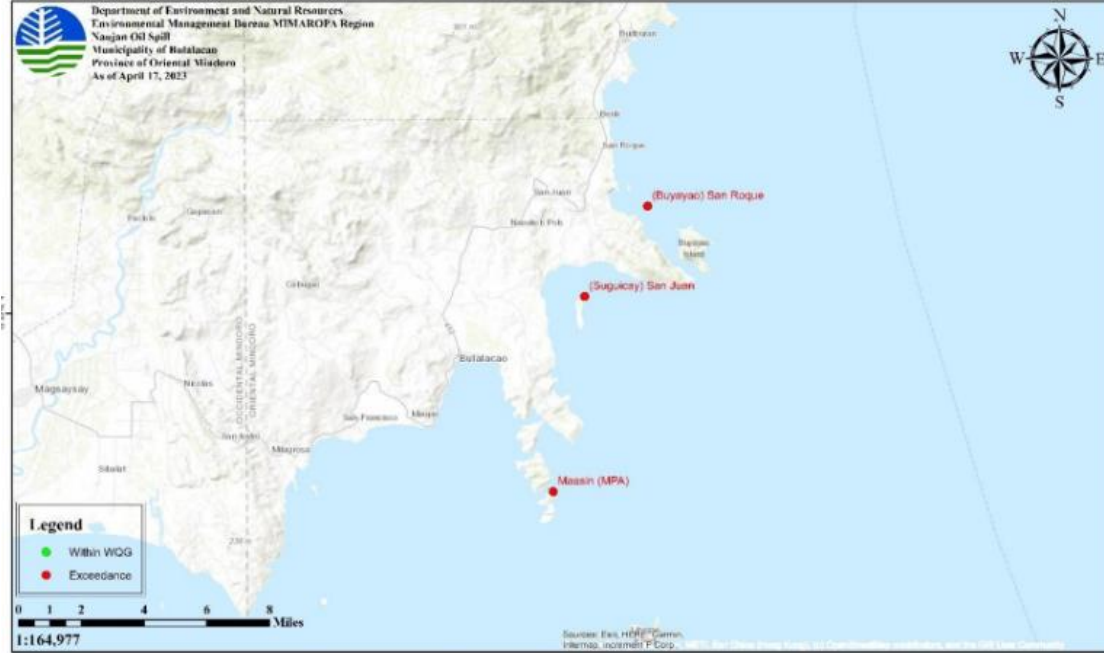
SAMPLING STATIONS AND RESULTS OF ANALYSIS – BONGABONG BAY, ORIENTAL MINDORO

						2023	2023	13, 2023	14, 2023	15, 2023	2023	2023	21, 2023
Bongabong Bay, Bongabong, Oriental Mindoro	1	Aplaya	Class SB	swimming, fishing area, docking of boat	2 mg/L	<1 mg/L	24 mg/L	9 mg/L	4 mg/L	7 mg/L	24 mg/L	1 mg/L	3 mg/L
	2	Poblacion	Class SB	swimming, fishing area,	2 mg/L	3 mg/L	3 mg/L	2 mg/L	7 mg/L	1 mg/L	31 mg/L	5 mg/L	12 mg/L
	3	Anilao MPA	Class SA	swimming, marine protected area	1 mg/L	9 mg/L	2 mg/L	6 mg/L	5 mg/L	28 mg/L	14 mg/L	6 mg/L	<1 mg/L
	4	Masaguisi MPA	Class SA	marine protected area, swimming	1 mg/L	5 mg/L	9 mg/L	3 mg/L	7 mg/L	7 mg/L	11 mg/L	<1 mg/L	2 mg/L

SAMPLING STATIONS AND RESULTS OF ANALYSIS – BONGABONG, ORIENTAL MINDORO (MARCH 23 TO April 17, 2023)

Source	Station No.	Station Identification	Classification	Current Beneficial Usage	WQG	Date of Sampling			
						March 25, 2023	March 25, 2023	March 27, 2023	April 17, 2023
Bongabong Bay, Bongabong, Oriental Mindoro	1	Aplaya	Class SB	swimming, fishing area, docking of boat	2 mg/L	<1 mg/L	24 mg/L	9 mg/L	14 mg/L
	2	Poblacion	Class SB	swimming, fishing area,	2 mg/L	3 mg/L	3 mg/L	2 mg/L	3 mg/L
	3	Anilao MPA	Class SA	swimming, marine protected area	1 mg/L	9 mg/L	2 mg/L	6 mg/L	7 mg/L
	4	Masaguisi MPA	Class SA	marine protected area, swimming	1 mg/L	5 mg/L	9 mg/L	3 mg/L	5 mg/L

SAMPLING STATIONS AND RESULTS OF ANALYSIS – BULALACAO, ORIENTAL MINDORO

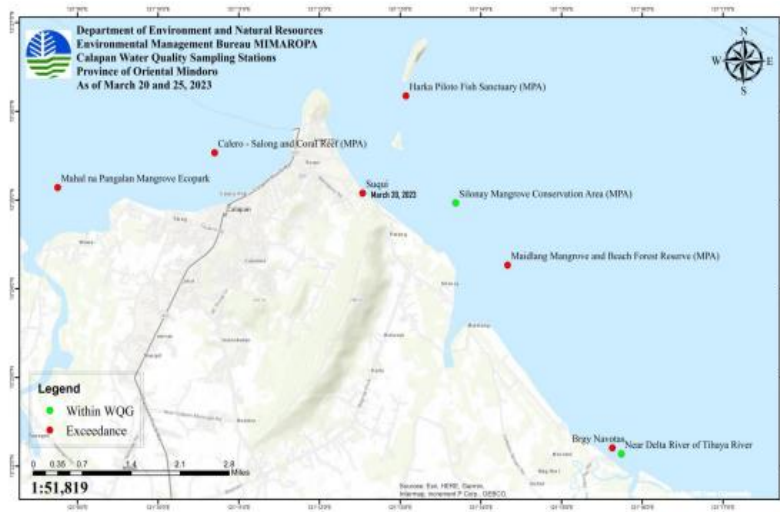


SAMPLING STATIONS AND RESULTS OF ANALYSIS – BULALACAO, ORIENTAL MINDORO (MARCH 29 and April 17, 2023)

Source	Station No.	Station Identification	Classification	Current Beneficial Usage	WQG	Date of Sampling	
						March 29, 2023	April 17, 2023
Bulalacao, Oriental Mindoro	1	Maasin (MPA)	Class SA	-	1 mg/L	4 mg/L	26 mg/L
	2	(Sugucay) San Juan	Class SB	-	2 mg/L	18 mg/L	5 mg/L

	3	(Buyayao) San Roque	Class SB	-	2 mg/L	8 mg/L	4 mg/L
--	---	------------------------	----------	---	--------	--------	--------

SAMPLING STATIONS AND RESULTS OF ANALYSIS – CALAPAN CITY, ORIENTAL MINDORO



SAMPLING STATIONS AND RESULTS OF ANALYSIS – CALAPAN CITY, ORIENTAL MINDORO (MARCH 16 TO 25, 2023)

Source	Station No.	Station Identification	Classification	Current Beneficial Usage	WQG	Date of Sampling							
						March 16, 2023	March 19, 2023	March 20, 2023	March 21, 2023	March 22, 2023	March 23, 2023	March 24, 2023	March 25, 2023
Calapan City, Oriental Mindoro	1	Maidlang Mangrove and Beach Forest Reserve (MPA)	Class SC	Mangrove	3 mg/L	3 mg/L	-	-	2 mg/L	28 mg/L	5 mg/L	3 mg/L	6 mg/L
	2	Silonay Mangrove Conservation Area (MPA)	Class SC	Mangrove	3 mg/L	19 mg/L	-	-	2 mg/L	11 mg/L	6 mg/L	2 mg/L	2 mg/L
	3	Harka Piloto Fish Sanctuary (MPA)	Class SA	Fish sanctuary	1 mg/L	15 mg/L	-	-	2 mg/L	6 mg/L	1 mg/L	4 mg/L	5 mg/L

4	Calero - Salong and Coral Reef (MPA)	Class SA	Reef	1 mg/L	2 mg/L	3 mg/L	31 mg/L	3 mg/L	14 mg/L	<1 mg/L	5 mg/L	3 mg/L
5	Mahal na Pangalan Mangrove Ecopark	Class SC	Mangrove	3 mg/L	11 mg/L	<1 mg/L	2 mg/L	<1 mg/L	13 mg/L	4 mg/L	2 mg/L	7 mg/L
6	Brgy Navotas	Class SB	Public beach area	2 mg/L	1 mg/L	<1 mg/L	8 mg/L	14 mg/L	43 mg/L	<1 mg/L	3 mg/L	4 mg/L
7	Near Delta of Tihaya River	Class SC	River delta	3 mg/L	<1 mg/L	-	-	3 mg/L	9 mg/L	2 mg/L	5 mg/L	1 mg/L
8	Suqui	Class SB		2 mg/L	-	3 mg/L	15 mg/L	-	-	-	-	-

SAMPLING STATIONS AND RESULTS OF ANALYSIS – GLORIA, ORIENTAL MINDORO



SAMPLING STATIONS AND RESULTS OF ANALYSIS – GLORIA, ORIENTAL MINDORO (MARCH 07 TO 15, 2023)

Source	Station No.	Station Identification	Classification	Current Beneficial Usage	WQG	Date of Sampling								
						March 7, 2023	March 8, 2023	March 9, 2023	March 10, 2023	March 11, 2023	March 12, 2023	March 13, 2023	March 14, 2023	March 15, 2023
Gloria (Coastal Waters), Oriental Mindoro	1	Aglasin (MPA)	Class SB	Marine protected area, swimming	2 mg/L	<1 mg/L	2 mg/L	2 mg/L	19 mg/L	<1 mg/L	51 mg/L	2 mg/L	8 mg/L	<1 mg/L
	2	Maragooc	Class SB	Swimming, fishing	2 mg/L	5 mg/L	2 mg/L	3 mg/L	44 mg/L	1 mg/L	38 mg/L	46 mg/L	6 mg/L	4 mg/L
	3	Guimbohan	Class SB	Swimming, fishing	2 mg/L	<1 mg/L	1 mg/L	2 mg/L	12 mg/L	1 mg/L	<1 mg/L	35 mg/L	6 mg/L	2 mg/L
	4	Sta. Theresa (MPA)	Class SA	Marine protected area, swimming,	1 mg/L	15 mg/L	1 mg/L	6 mg/L	45 mg/L	4 mg/L	3 mg/L	6 mg/L	15 mg/L	4 mg/L

				fishing										
	5	Balete	Class SC	With mangrove area, swimming, fishing	3 mg/L	10 mg/L	4 mg/L	1 mg/L	5 mg/L	5 mg/L	3 mg/L	102 mg/L	29 mg/L	25 mg/L
	6	San Antonio	Class SB	Swimming, fishing	2 mg/L	12 mg/L	10 mg/L	2 mg/L	3 mg/L	-	<1 mg/L	27 mg/L	1 mg/L	6 mg/L
	7	Kawit	Class SB	Swimming, fishing	2 mg/L	13 mg/L	6 mg/L	<1 mg/L	8 mg/L	3 mg/L	<1 mg/L	23 mg/L	13 mg/L	<1 mg/L
	8	Tambong	Class SA	Marine protected area, swimming,	1 mg/L	13 mg/L	3 mg/L	2 mg/L	2 mg/L	20 mg/L	10 mg/L	19 mg/L	1 mg/L	3 mg/L

				fishing										
--	--	--	--	---------	--	--	--	--	--	--	--	--	--	--

SAMPLING STATIONS AND RESULTS OF ANALYSIS – GLORIA, ORIENTAL MINDORO (MARCH 16 TO APRIL 16, 2023)

Source	Station No.	Station Identification	Classification	Current Beneficial Usage	WQG	Date of Sampling								
						March 16, 2023	March 17, 2023	March 18, 2023	March 19, 2023	March 21, 2023	March 23, 2023	March 25, 2023	March 27, 2023	April 16, 2023
Gloria (Coastal Waters), Oriental	1	Aglasin (MPA)	Class SB	Marine protected area, swimming	2 mg/L	2 mg/L	3 mg/L	7 mg/L	<1 mg/L	2 mg/L	5 mg/L	9 mg/L	23 mg/L	5 mg/L

Mindoro	2	Maragooc	Class SB	Swimming, fishing	2 mg/L	23 mg/L	1 mg/L	1 mg/L	<1 mg/L	4 mg/L	9 mg/L	9 mg/L	2 mg/L	8 mg/L
	3	Guimbohan	Class SB	Swimming, fishing	2 mg/L	2 mg/L	4 mg/L	<1 mg/L	<1 mg/L	4 mg/L	7 mg/L	7 mg/L	1 mg/L	6 mg/L
	4	Sta. Theresa (MPA)	Class SA	Marine protected area, swimming, fishing	1 mg/L	1 mg/L	4 mg/L	6 mg/L	1 mg/L	7 mg/L	9 mg/L	7 mg/L	3 mg/L	6 mg/L
	5	Balete	Class SC	With mangrove area, swimming, fishing	3 mg/L	3,499 mg/L	2 mg/L	8 mg/L	4 mg/L	6 mg/L	7 mg/L	7 mg/L	3 mg/L	4 mg/L
	6	San Antonio	Class SB	Swimming, fishing	2 mg/L	5 mg/L	5 mg/L	<1 mg/L	<1 mg/L	8 mg/L	<1 mg/L	5 mg/L	5 mg/L	3 mg/L

	7	Kawit	Class SB	Swimming, fishing	2 mg/L	13 mg/L	4 mg/L	20 mg/L	10 mg/L	4 mg/L	<1 mg/L	6 mg/L	3 mg/L	31 mg/L
	8	Tambong	Class SA	Marine protected area, swimming, fishing	1 mg/L	2 mg/L	5 mg/L	<1 mg/L	2 mg/L	13 mg/L	1 mg/L	2 mg/L	5 mg/L	4 mg/L

SAMPLING STATIONS AND RESULTS OF ANALYSIS – MANSALAY, ORIENTAL MINDORO



SAMPLING STATIONS AND RESULTS OF ANALYSIS – MANSALAY, ORIENTAL MINDORO (MARCH 29, 2023)

Source	Station No.	Station Identification	Classification	Current Beneficial Usage	WQG	Date of Sampling	
						March 29, 2023	April 17, 2023
Mansaslay, Oriental	1	B. Del Mundo	Class SB	-	2 mg/L	14 mg/L	5 mg/L

Naujan Municipal Waters	1	Estrella	Class SB	Swimming, fishing, tourist area, docking of boat, residential area (20- 30 meters away from the beach)	2 mg/L	2 mg/L	5 mg/L	3 mg/L	8 mg/L	3 mg/L	<1 mg/L	16 mg/L	2 mg/L	1 mg/L	2 mg/L
	2	Sta. Cruz	Class SC	Fishing, docking of boat, swimming	3 mg/L	13 mg/L	5 mg/L	3 mg/L	13 mg/L	<1 mg/L	3 mg/L	9 mg/L	2 mg/L	<1 mg/L	3 mg/L

	3	San Jose (Sitio Pitogo)	Class SB	Swimming, presence of beach resort, tourist area	2 mg/L	<1 mg/L	4 mg/L	49 mg/L	9 mg/L	16 mg/L	1 mg/L	30 mg/L	4 mg/L	7 mg/L	3 mg/L
--	---	----------------------------	----------	--	--------	---------	--------	---------	--------	---------	--------	---------	--------	--------	--------

	4	San Jose (Sitio 1)	Class SC	Docking, fishing, swimming with residential area	3 mg/L	11 mg/L	5 mg/L	8 mg/L	12 mg/L	10 mg/L	3 mg/L	31 mg/L	15 mg/L	11 mg/L	34 mg/L
	5	Antipolo/San Jose Proper	Class SC	Swimming, docking of boat, fishing, residential	3 mg/L	21 mg/L	NO SAMPLING WAS CONDUCTED PER ADVICE OF MDRRMO/PCG/BANTAY DAGAT AND FISHERY MANAGEMENT UNIT DUE TO BAD WEATHER								-

				area													
	6	Brgy. Melgar A/ Pitogo Beach	Class SB	Swimming with residential area	2 mg/L	7 mg/L	8 mg/L	3 mg/L	15 mg/L	2 mg/L	5 mg/L	8 mg/L	19 mg/L	10 mg/L	32 mg/L		
	7	Melgar B/ Papangkil Beach	Class SC	Swimming, fishing area, with residential area	3 mg/L	9 mg/L	5 mg/L	6 mg/L	11mg/L	<1 mg/L	9 mg/L	11 mg/L	22 mg/L	3 mg/L	9 mg/L		
	8	Buloc-Buloc Fish Sanctuary	Class SA	Tourist area, fish sanctuary	1 mg/L	<1 mg/L	NO SAMPLING WAS CONDUCTED PER ADVICE OF MDRRMO/PCG/BANT		9 mg/L	NO SAMPLING WAS CONDUCTED PER ADVICE OF MDRRMO/PCG/BANTAY DAGAT AND FISHERY MANAGEMENT UNIT DUE TO BAD WEATHER					-		

Naujan Municipal Waters	1	Estrella	Class SB	Swimming, fishing, tourist area, docking of boat, residential area (20-30 meters away from the beach)	2 mg/L	30 mg/L	9 mg/L	7 mg/L	7 mg/L	14 mg/L	<1 mg/L	5 mg/L
	2	Sta. Cruz	Class SC	Fishing, docking of boat, swimming	3 mg/L	1 mg/L	18 mg/L	2 mg/L	10 mg/L	4 mg/L	4 mg/L	<1 mg/L
	3	San Jose (Sitio Pitogo)	Class SB	Swimming, presence of beach resort, tourist area	2 mg/L	19 mg/L	5 mg/L	4 mg/L	10 mg/L	9 mg/L	4 mg/L	4 mg/L
	4	San Jose (Sitio 1)	Class SC	Docking, fishing, swimming with residential area	3 mg/L	6 mg/L	8 mg/L	14 mg/L	10 mg/L	6 mg/L	21 mg/L	8 mg/L

	5	Antipolo/S an Jose Proper	Class SC	Swimming, docking of boat, fishing, residential area	3 mg/L	NO SAMPLING WAS CONDUCTED PER ADVICE OF MDRRMO/PCG/BAN TAY DAGAT AND FISHERY MANAGEMENT UNIT DUE TO BAD WEATHER	-	-	-	-	-	-
--	---	---------------------------------	----------	--	--------	--	---	---	---	---	---	---

	6	Brgy. Melgar A/ Pitogo Beach	Class SB	Swimming with residential area	2 mg/L	<1 mg/L	11 mg/L	1 mg/L	55 mg/L	6 mg/L	<1 mg/L	10 mg/L
	7	Melgar B/ Papangkil Beach	Class SC	Swimming, fishing area, with residential area	3 mg/L	<1 mg/L	12 mg/L	8 mg/L	23 mg/L	10 mg/L	3 mg/L	4 mg/L

	8	Buloc-Buloc Fish Sanctuary	Class SA	Tourist area, fish sanctuary	1 mg/L	NO SAMPLING WAS CONDUCTED PER ADVICE OF MDRRMO/PCG/BANTAY DAGAT AND FISHERY MANAGEMENT UNIT DUE TO BAD WEATHER
	9	Montemayor Proper	Class SA	Swimming, fishing	2 mg/L	
	10	Masaguig	Class SA	Swimming, fishing	1 mg/L	
	11	Tujod Fish Sanctuary	Class SA	Fish sanctuary	1 mg/L	

SAMPLING STATIONS AND RESULTS OF ANALYSIS – NAUJAN, ORIENTAL MINDORO (MARCH 19 TO 27, 2023)

Source	Station No.	Station Identification	Classification	Current Beneficial Usage	WQG	Date of Sampling				
						March 19, 2023	March 21, 2023	March 23, 2023	March 25, 2023	March 27, 2023
Naujan Municipal Waters	1	Estrella	Class SB	Swimming, fishing, tourist area, docking of boat, residential area (20-30 meters away from the beach)	2 mg/L	6 mg/L	1 mg/L	<1 mg/L	2 mg/L	14 mg/L

2	Sta. Cruz	Class SC	Fishing, docking of boat, swimming	3 mg/L	10 mg/L	4 mg/L	1 mg/L	5 mg/L	-
3	San Jose (Sitio Pitogo)	Class SB	Swimming, presence of beach resort, tourist area	2 mg/L	6 mg/L	-	6 mg/L	7 mg/L	5 mg/L
4	San Jose (Sitio 1)	Class SC	Docking, fishing, swimming with residential area	3 mg/L	5 mg/L	8 mg/L	5 mg/L	14 mg/L	10 mg/L
5	Antipolo/San Jose Proper	Class SC	Swimming, docking of boat, fishing, residential area	3 mg/L	-	-	-	-	-
6	Brgy. Melgar A/ Pitogo Beach	Class SB	Swimming with residential area	2 mg/L	3 mg/L	15 mg/L	<1 mg/L	3 mg/L	5 mg/L
7	Melgar B/ Papangkil Beach	Class SC	Swimming, fishing area, with residential area	3 mg/L	10 mg/L	4 mg/L	2 mg/L	32 mg/L	6 mg/L
8	Buloc-Buloc Fish Sanctuary	Class SA	Tourist area, fish sanctuary	1 mg/L	11 mg/L	11 mg/L	5 mg/L	5 mg/L	2 mg/L
9	Montemayor Proper	Class SA	Swimming, fishing	2 mg/L	2 mg/L	4 mg/L	11 mg/L	13 mg/L	5 mg/L

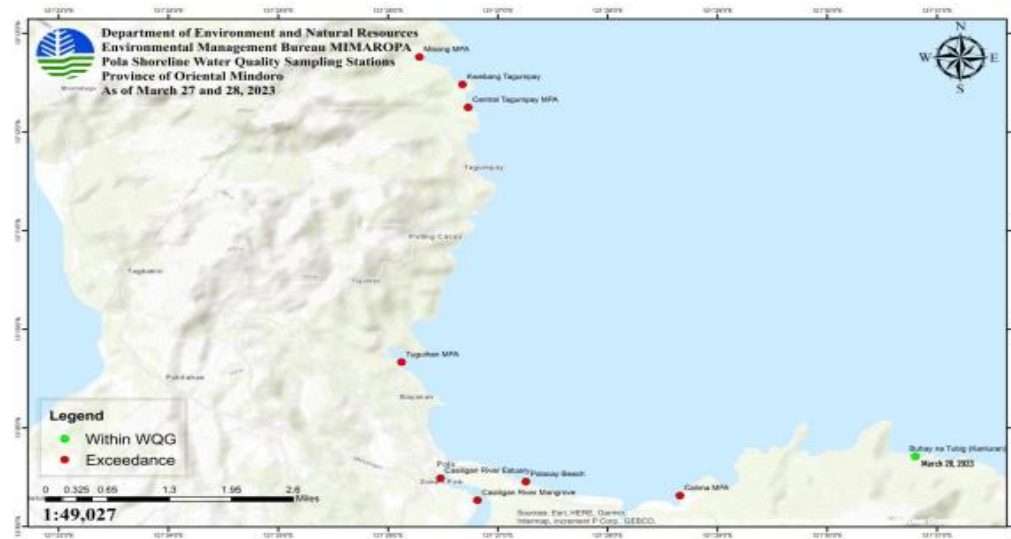
	10	Masaguing	Class SA	Swimming, fishing	1 mg/L	5 mg/L	3 mg/L	<1 mg/L	5 mg/L	10 mg/L
	11	Tujod Fish Sanctuary	Class SA	Fish sanctuary	1 mg/L	<1 mg/L	5 mg/L	4 mg/L	26 mg/L	11 mg/L

SAMPLING STATIONS AND RESULTS OF ANALYSIS – NAUJAN MUNICIPAL WATERS 400m AWAY FROM SHORE (MARCH 4 TO 18, 2023)

Source	Station No.	Station Identification	Classification	Current Beneficial Usage	WQG	Date of Sampling					
						March 4, 2023	March 13, 2023	March 14, 2023	March 16, 2023	March 17, 2023	March 18, 2023
Naujan Municipal Waters 400m away from shore	1	Estrella Beach Bay	Class SB	swimming, fishing, tourist area, docking of boat, residential area (20-30 meters away from the beach)	2 mg/L	-	<1 mg/L	14 mg/L	13 mg/L	-	7 mg/L
	2	Naujan Cemetery	Class SC	Fishing, docking of boat, swimming	3 mg/L	-	8 mg/L	8 mg/L	3 mg/L	-	<1 mg/L
	3	Brgy Sta. Cruz	Class SB	swimming, presence of beach resort, tourist area	2 mg/L	-	3 mg/L	9 mg/L	11 mg/L	-	2 mg/L

	4	San Jose 1	Class SC	docking of boat, fishing, swimming, with residential area	3 mg/L	-	2 mg/L	26 mg/L	11 mg/L	-	19 mg/L
	5	San Jose Proper	Class SC	swimming, docking of boat, fishing, residential area	3 mg/L	-	4 mg/L	25 mg/L	10 mg/L	-	-
	6	Pitugo Beach	Class SB	swimming, with residential area	2 mg/L	-	2 mg/L	20 mg/L	-	-	25 mg/L
	7	Papangkil Beach	Class SC	swimming, fishing with residential area	3 mg/L	-	12 mg/L	13 mg/L	-	-	16 mg/L
	8	Buloc-Buloc (Mangrove)	Class SA	Tourist area, Fish sanctuary	1 mg/L	9 mg/L	12 mg/L	7 mg/L	-	<1 mg/L	3 mg/L
	9	Montemayor	Class SB	swimming, fishing	2 mg/L	5 mg/L	30 mg/L	10 mg/L	-	28 mg/L	5 mg/L
	10	Masaguing	Class SA	swimming, fishing	1 mg/L	12 mg/L	15 mg/L	7 mg/L	-	8 mg/L	8 mg/L
	11	Tujod Fish Sanctuary	Class SA	Fish sanctuary	1 mg/L	8 mg/L	12 mg/L	4 mg/L	-	11 mg/L	6 mg/L

SAMPLING STATIONS AND RESULTS OF ANALYSIS - POLA, ORIENTAL MINDORO



SAMPLING STATIONS AND RESULTS OF ANALYSIS - POLA, ORIENTAL MINDORO

(MARCH 1 TO 10, 2023)

Source	Station No.	Station Identification	Classification	Current Beneficial Use	WQG	Date of Sampling									
						March 1, 2023	March 2, 2023	March 3, 2023	March 4, 2023	March 5, 2023	March 6, 2023	March 7, 2023	March 8, 2023	March 9, 2023	March 10, 2023
Pola Shoreline	1	Misong MPA	Class SA	Tourist area, fishing, fish	1 mg/L	-	20 mg/L	5 mg/L	3 mg/L	<1 mg/L	4 mg/L	9 mg/L	12 mg/L	3 mg/L	2 mg/L

			sanctuary												
2	Central Tagumpay MPA	Class SA	Tourist area	1 mg/L	-	10 mg/L	7 mg/L	15 mg/L	2 mg/L	7 mg/L	6 mg/L	17 mg/L	4 mg/L	2 mg/L	
3	Tuguihan MPA	Class SC	Port of Pola, Docking of boat, fishing sanctuary	3 mg/L	-	-	6 mg/L	25 mg/L	7 mg/L	5 mg/L	5 mg/L	12 mg/L	34 mg/L	<1 mg/L	
4	Casiligan River Estuary	Class SA	Casiligan drainage area	1 mg/L	-	-	4 mg/L	4 mg/L	4 mg/L	4 mg/L	6 mg/L	5 mg/L	3 mg/L	11 mg/L	
5	Calima MPA	Class SB	Fishing sanctuary, fishing	2 mg/L	-	3 mg/L	8 mg/L	5 mg/L	<1 mg/L	<1 mg/L	NO SAMPLING WAS CONDUCTED PER ADVICE OF MDRRMO/PCG/BANTAY DAGAT AND FISHERY MANAGEMENT	1 mg/L	3 mg/L	14 mg/L	
6	Polacay Beach	Class SC	Tourist area, presence of resort	3 mg/L	-	1 mg/L	4 mg/L	5 mg/L	<1 mg/L	<1 mg/L		3 mg/L	<1 mg/L	<1 mg/L	

	7	Casiligan River Mangrove	Class SC	Within mangrove area, near boat docking area	3 mg/L	-	-	-	14 mg/L	3 mg/L	12 mg/L	UNIT DUE TO BAD WEATHER	2 mg/L	2 mg/L	<1 mg/L
	8	Kwebang Tagumpay	Class SA	Within private resort, fishing, swimming	1 mg/L	-	-	10 mg/L	-					8 mg/L	1 mg/L

SAMPLING STATIONS AND RESULTS OF ANALYSIS - POLA, ORIENTAL MINDORO (MARCH 11 TO 19, 2023)

Source	Station No.	Station Identification	Classification	Current Beneficial Use	WQG	Date of Sampling								
						March 11, 2023	March 12, 2023	March 13, 2023	March 14, 2023	March 15, 2023	March 16, 2023	March 17, 2023	March 18, 2023	March 19, 2023
Pola Shoreline	1	Misong MPA	Class SA	Tourist area, fishing, fish sanctuary	1 mg/L	3 mg/L	7 mg/L	1 mg/L	2 mg/L	4 mg/L	12 mg/L	4 mg/L	6 mg/L	<1 mg/L
	2	Central Tagumpay	Class SA	Tourist area	1 mg/L	1 mg/L	5 mg/L	9 mg/L	7 mg/L	4 mg/L	14 mg/L	17 mg/L	1 mg/L	3 mg/L

		MPA												
3	Tuguihan MPA	Class SC	Port of Pola, Docking of boat, fishing sanctuary	3 mg/L	15 mg/L	12 mg/L	8 mg/L	8 mg/L	4 mg/L	2 mg/L	20 mg/L	6 mg/L	6 mg/L	
4	Casiligan River Estuary	Class SA	Casiligan drainage area	1 mg/L	12 mg/L	27 mg/L	5 mg/L	5 mg/L	13 mg/L	12 mg/L	13 mg/L	2 mg/L	2 mg/L	
5	Calima MPA	Class SB	Fishing sanctuary, fishing	2 mg/L	3 mg/L	17 mg/L	3 mg/L	3 mg/L	5 mg/L	20 mg/L	2 mg/L	5 mg/L	4 mg/L	
6	Polacay Beach	Class SB	Tourist area, presence of resort	2 mg/L	18 mg/L	6 mg/L	8 mg/L	1 mg/L	20 mg/L	17 mg/L	9 mg/L	8 mg/L	3 mg/L	
7	Casiligan River Mangrove	Class SC	Within mangrove area, near boat docking area	3 mg/L	<1 mg/L	4 mg/L	10 mg/L	6 mg/L	2 mg/L	2 mg/L	3 mg/L	5 mg/L	2 mg/L	
8	Kwebang Tagumpay	Class SA	Within private resort, fishing, swimming	1 mg/L	3 mg/L	<1 mg/L	4 mg/L	5 mg/L	2 mg/L	3 mg/L	6 mg/L	3 mg/L	7 mg/L	

	9	Buhay na Tubig (Kanluran)	Class SA		1 mg/L	-	-	-	-	4 mg/L	-	-	-	-
	10	Buhay na Tubig (Sawang)	Class SA		1 mg/L	-	-	-	-	5 mg/L	-	-	-	-
	11	Buhay na Tubig (Central)	Class SA		1 mg/L	-	-	-	-	<1 mg/L	-	-	-	-

SAMPLING STATIONS AND RESULTS OF ANALYSIS - POLA, ORIENTAL MINDORO (MARCH 21 TO 28, 2023)

Source	Station No.	Station Identification	Classification	Current Beneficial Use	WQG	Date of Sampling				
						March 21, 2023	March 23, 2023	March 25, 2023	March 27, 2023	March 28, 2023
Pola	1	Misong MPA	Class SA	Tourist area, fishing, fish sanctuary	1 mg/L	4 mg/L	4 mg/L	31 mg/L	6 mg/L	-

Shoreline	2	Central Tagumpay MPA	Class SA	Tourist area	1 mg/L	4 mg/L	<1 mg/L	72 mg/L	3 mg/L	-
	3	Tuguihan MPA	Class SC	Port of Pola, Docking of boat, fishing sanctuary	3 mg/L	4 mg/L	3 mg/L	13 mg/L	15 mg/L	-
	4	Casiligan River Estuary	Class SA	Casiligan drainage area	1 mg/L	24 mg/L	<1 mg/L	12 mg/L	8 mg/L	-
	5	Calima MPA	Class SB	Fishing sanctuary, fishing	2 mg/L	5 mg/L	<1 mg/L	10 mg/L	5 mg/L	-
	6	Polacay Beach	Class SB	Tourist area, presence of resort	2 mg/L	5 mg/L	<1 mg/L	10 mg/L	7 mg/L	-
	7	Casiligan River Mangrove	Class SC	Within mangrove area, near boat docking area	3 mg/L	4 mg/L	1 mg/L	17 mg/L	6 mg/L	-
	8	Kwebang Tagumpay	Class SA	Within private resort, fishing, swimming	1 mg/L	-	3 mg/L	11 mg/L	12 mg/L	-
	9	Buhay na Tubig (Kanluran)	Class SA		1 mg/L	-	<1 mg/L	-	-	2 mg/L

	10	Buhay na Tubig (Sawang)	Class SA		1 mg/L	-	3 mg/L	-	-	-
	11	Buhay na Tubig (Central)	Class SA		1 mg/L	-	<1 mg/L	-	-	-
	12	Calima (Sitio Dayap)				-	5 mg/L	5 mg/L	-	-

Pinamalayan Bay (Coastal), Oriental Mindoro	1	Brgy. Lumang Bayan	Class SC	Swimming, docking of boat	3 mg/L	<1 mg/L	NO SAMPLING WAS CONDUCTED PER ADVICE OF MDRRMO/PCG/BANTAY DAGAT AND FISHERY MANAGEMENT UNIT DUE TO BAD WEATHER				12 mg/L	2 mg/L	<1 mg/L	27 mg/L
	2	Simborio Fish Sanctuary	Class SA	Fishing	1 mg/L	9 mg/L	4 mg/L	9 mg/L	3 mg/L	2 mg/L	35 mg/L	5 mg/L	2 mg/L	12 mg/L
	3	Ginapangan Fish Sanctuary	Class SA	Fish sanctuary	1 mg/L	47 mg/L	6 mg/L	17 mg/L	3 mg/L	1 mg/L	17 mg/L	3 mg/L	<1 mg/L	5 mg/L
	4	Pili Fish Sanctuary	Class SA	Swimming, Fishing, fish sanctuary	1 mg/L	4 mg/L	4 mg/L	6 mg/L	5 mg/L	1 mg/L	21 mg/L	4 mg/L	2 mg/L	6 mg/L
	5	Ranzo Fish Sanctuary	Class SA	Swimming, fishing	1 mg/L	3 mg/L	6 mg/L	2 mg/L	3 mg/L	16 mg/L	7 mg/L	1 mg/L	4 mg/L	5 mg/L
	6	Marfrancisco (NEW STATION)	(NEW STATION)	Swimming, Fishing	2 mg/L	-	-	-			10 mg/L	3 mg/L	5 mg/L	4 mg/L

SAMPLING STATIONS AND RESULTS OF ANALYSIS - PINAMALAYAN, ORIENTAL MINDORO (MARCH 11 TO 19, 2023)

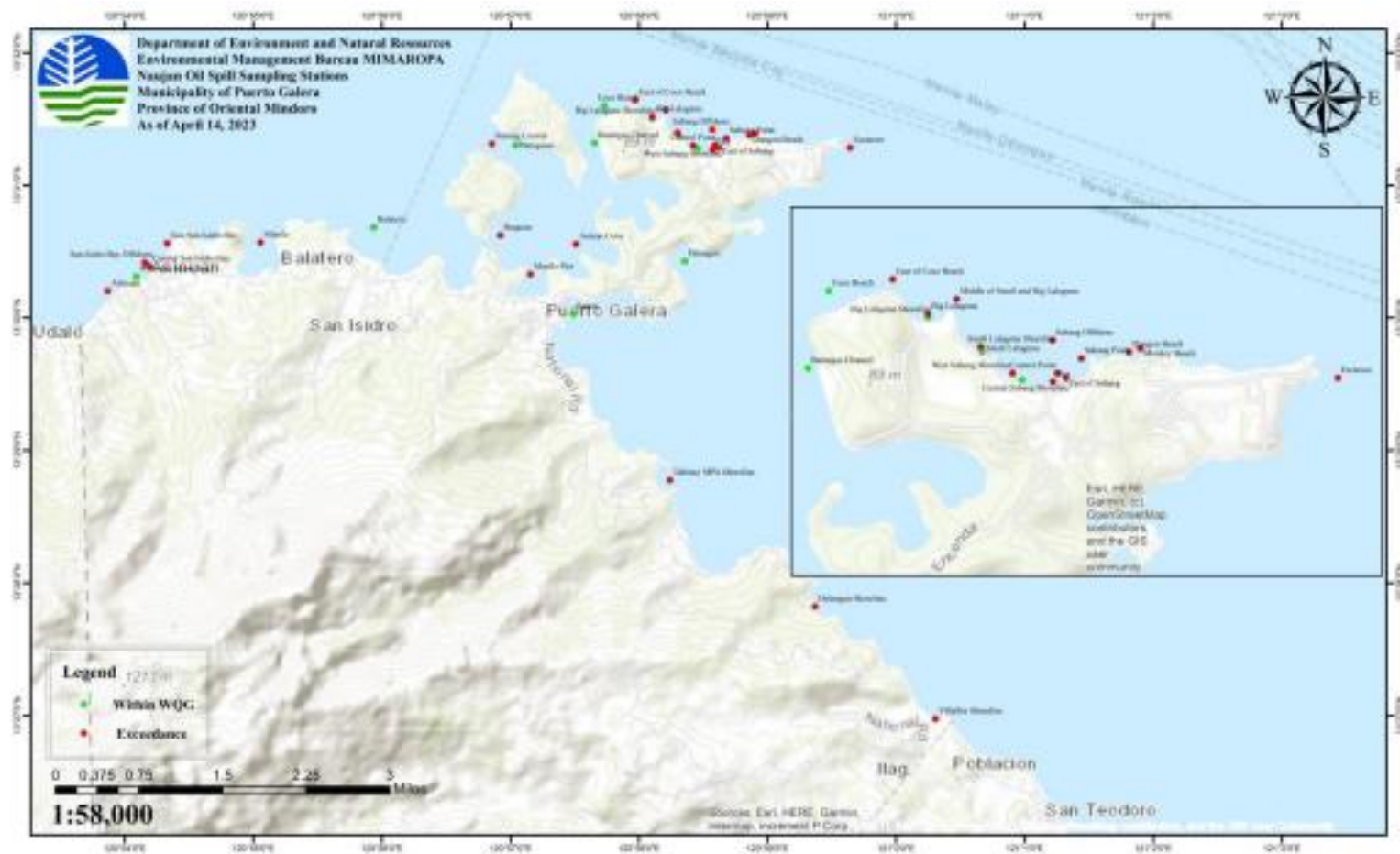
Source	Station No.	Station Identification	Classification	Current Beneficial Usage	WQG	Date of Sampling								
						March 11, 2023	March 12, 2023	March 13, 2023	March 14, 2023	March 15, 2023	March 16, 2023	March 17, 2023	March 18, 2023	March 19, 2023
Pinamalayan Bay (Coastal), Oriental Mindoro	1	Brgy. Lumang Bayan	Class SC	Swimming, docking of boat	3 mg/L	24 mg/L	5 mg/L	-	8 mg/L	5 mg/L	5 mg/L	-	13 mg/L	8 mg/L
	2	Simborio Fish Sanctuary	Class SA	Fishing	1 mg/L	-	27 mg/L	60 mg/L	6 mg/L	9 mg/L	14 mg/L	5 mg/L	6 mg/L	7 mg/L
	3	Ginapangan Fish Sanctuary	Class SA	Fish sanctuary	1 mg/L	27 mg/L	15 mg/L	9 mg/L	5 mg/L	8 mg/L	6 mg/L	4 mg/L	10 mg/L	<1 mg/L
	4	Pili Fish Sanctuary	Class SA	Swimming, Fishing, fish sanctuary	1 mg/L	9 mg/L	17 mg/L	9 mg/L	8 mg/L	8 mg/L	4 mg/L	8 mg/L	<1 mg/L	4 mg/L
	5	Ranzo Fish Sanctuary	Class SA	Swimming, fishing	1 mg/L	-	9 mg/L	-	5 mg/L	55 mg/L	5 mg/L	8 mg/L	7 mg/L	17 mg/L

	6	Marfrancisco	Class SB	(NEW STATION)	2 mg/L	3 mg/L	<1 mg/L	29 mg/L	8 mg/L	5 mg/L	2 mg/L	-	3 mg/L	<1 mg/L
--	---	--------------	----------	---------------	--------	--------	---------	---------	--------	--------	--------	---	--------	---------

SAMPLING STATIONS AND RESULTS OF ANALYSIS - PINAMALAYAN, ORIENTAL MINDORO (MARCH 21 TO APRIL 16, 2023)

Source	Station No.	Station Identification	Classification	Current Beneficial Usage	WQG	Date of Sampling				
						March 21, 2023	March 23, 2023	March 25, 2023	March 27, 2023	April 16, 2023
Pinamalayan Bay (Coastal), Oriental Mindoro	1	Brgy. Lumang Bayan	Class SC	Swimming, docking of boat	3 mg/L	24 mg/L	2 mg/L	<1 mg/L	3 mg/L	24 mg/L
	2	Simborio Fish Sanctuary	Class SA	Fishing	1 mg/L	4 mg/L	<1 mg/L	2 mg/L	2 mg/L	6 mg/L
	3	Ginapangan Fish Sanctuary	Class SA	Fish sanctuary	1 mg/L	<1 mg/L	7 mg/L	1 mg/L	6 mg/L	11 mg/L

	4	Pili Fish Sanctuary	Class SA	Swimming, Fishing, fish sanctuary	1 mg/L	<1 mg/L	2 mg/L	<1 mg/L	3 mg/L	-
	5	Ranzo Fish Sanctuary	Class SA	Swimming, fishing	1 mg/L	34 mg/L	3 mg/L	1 mg/L	4 mg/L	5 mg/L
	6	Marfrancisco	Class SB	(NEW STATION)	2 mg/L	<1 mg/L	<1 mg/L	2 mg/L	3 mg/L	3 mg/L



SAMPLING STATIONS AND RESULTS OF ANALYSIS – PUERTO GALERA, ORIENTAL MINDORO

SAMPLING STATIONS AND RESULTS OF ANALYSIS – PUERTO GALERA, ORIENTAL MINDORO (MARCH 15 TO APRIL 14, 2023)

Source	Station No.	Station Identification	Classification	WQG	Date of Sampling							
					March 15, 2023	March 27, 2023	March 30, 2023	April 1, 2023	April 2, 2023	April 3, 2023	April 10, 2023	April 14, 2023
Puerto Galera, Oriental Mindoro	1	Monkey Beach	Class SB	2 mg/L	<1 mg/L	-	<1 mg/L	1 mg/L	-	18 mg/L	4 mg/L	7 mg/L
	2	Dungon Beach	Class SB	2 mg/L	17 mg/L	-	9 mg/L	1 mg/L	-	4 mg/L	5 mg/L	4 mg/L
	3	Balete	Class SB	2 mg/L	-	<1 mg/L	5 mg/L	8 mg/L	9 mg/L	-	3 mg/L	1 mg/L
	4	Palangan	Class SB	2 mg/L	-	4 mg/L	1 mg/L	2 mg/L	18 mg/L	10 mg/L	2 mg/L	-
	5	Escarceo	Class SB	2 mg/L	-	1 mg/L	2 mg/L	1 mg/L	3 mg/L	-	2 mg/L	3 mg/L
	6	Villaflor Shoreline	Class SB	2 mg/L	-	-	4 mg/L	5 mg/L	4 mg/L	-	1 mg/L	4 mg/L
	7	Dulangan Shoreline	Class SB	2 mg/L	-	-	5 mg/L	1 mg/L	4 mg/L	13 mg/L	3 mg/L	47 mg/L
	8	Tabinay MPA Shoreline	Class SB	2 mg/L	-	-	3 mg/L	4 mg/L	8 mg/L	9 mg/L	4 mg/L	12 mg/L
	9	Sabang Point	Class SB	2 mg/L	-	-	<1 mg/L	2 mg/L	-	26 mg/L	8 mg/L	5 mg/L
	10	Control Point	Class SB	2 mg/L	-	-	7 mg/L	1 mg/L	-	11 mg/L	9 mg/L	4 mg/L
	11	East of Sabang	Class SB	2 mg/L	8 mg/L	-	<1 mg/L	1 mg/L	-	13 mg/L	8 mg/L	19 mg/L

	12	Pier	Class SB	2 mg/L	6 mg/L	-	2 mg/L	2 mg/L	-	12 mg/L	6 mg/L	4 mg/L
	13	Sabang Central	Class SB	2 mg/L	-	-	5 mg/L	<1 mg/L	-	<1 mg/L	3 mg/L	24 mg/L
	14	Central Sabang Shoreline	Class SB	2 mg/L	-	-	4 mg/L	2 mg/L	-	-	2 mg/L	2 mg/L
	15	West Sabang Shoreline	Class SB	2 mg/L	-	-	14 mg/L	2 mg/L	-	-	5 mg/L	7 mg/L
	16	Small Lalaguna Shoreline	Class SB	2 mg/L	-	-	3 mg/L	2 mg/L	-	1 mg/L	<1 mg/L	4 mg/L
	17	Small Lalaguna	Class SB	2 mg/L	-	-	4 mg/L	2 mg/L	-	18 mg/L	1 mg/L	<1 mg/L
	18	Middle of Small and Big Lalaguna	Class SB	2 mg/L	-	-	4 mg/L	5 mg/L		<1 mg/L	1 mg/L	3 mg/L

	19	Big Lalaguna	Class SB	2 mg/L	-	-	3 mg/L	3 mg/L	-	7 mg/L	<1 mg/L	4 mg/L
	20	Big Lalaguna Shoreline	Class SB	2 mg/L	-	-	5 mg/L	3 mg/L	-	10 mg/L	3 mg/L	2 mg/L
	21	East of Coco Beach	Class SB	2 mg/L	-	-	5 mg/L	3 mg/L	-	4 mg/L	3 mg/L	4 mg/L

22	Coco Beach	Class SB	2 mg/L	-	-	<1 mg/L	2 mg/L	-	<1 mg/L	<1 mg/L	2 mg/L
23	Batangas Channel	Class SB	2 mg/L	-	-	4 mg/L	3 mg/L	-	6 mg/L	4 mg/L	2 mg/L
24	Asinan Cove	Class SB	2 mg/L	-	-	16 mg/L	5 mg/L	-	5 mg/L	35 mg/L	4 mg/L
25	Paniquian	Class SB	2 mg/L	-	-	4 mg/L	4 mg/L	-	<1 mg/L	2 mg/L	1 mg/L
26	Aninuan	Class SB	2 mg/L	-	-	7 mg/L	5 mg/L	-	14 mg/L	2 mg/L	5 mg/L
27	West San Isidro Bay	Class SB	2 mg/L	-	-	6 mg/L	4 mg/L	-	<1 mg/L	1 mg/L	<1 mg/L
28	East San Isidro Bay	Class SB	2 mg/L	-	-	1 mg/L	2 mg/L	-	2 mg/L	<1 mg/L	10 mg/L
29	Central San Isidro Bay	Class SB	2 mg/L	-	-	5 mg/L	5 mg/L	-	25 mg/L	2 mg/L	10 mg/L
30	Minolo	Class SB	2 mg/L	-	-	6 mg/L	4 mg/L	-	-	2 mg/L	3 mg/L
31	Balatero	Class SB	2 mg/L	-	-	4 mg/L	4 mg/L	-	3 mg/L	5 mg/L	2 mg/L
32	Boquete	Class SB	2 mg/L	-	-	2 mg/L	4 mg/L	-	4 mg/L	5 mg/L	10 mg/L
33	Muelle Pier	Class SB	2 mg/L	-	-	4 mg/L	4 mg/L	-	7 mg/L	-	6 mg/L
34	Sabang Offshore	Class SB	2 mg/L	-	-	-	4 mg/L	-	4 mg/L	42 mg/L	3 mg/L
35	San Isidro Bay Offshore	Class SB	2 mg/L	-	-	-	4 mg/L	-	10 mg/L	4 mg/L	4 mg/L

Roxas Bay, Roxas, Oriental Mindoro	1	Dalahican	Class SB	Swimming, fishing, with household near the beach front	2 mg/L	-	-	4 mg/L	6 mg/L	14 mg/L	4 mg/L	8 mg/L	1 mg/L	34 mg/L	4 mg/L
	2	Dangay	Class SB	Swimming, fishing, household area	2 mg/L	-	-	4 mg/L	5 mg/L	3 mg/L	4 mg/L	5 mg/L	2 mg/L	22 mg/L	5 mg/L
	3	Paclasan	Class SB	Swimming, fishing, household area	2 mg/L	-	-	4 mg/L	4 mg/L	2 mg/L	4 mg/L	4 mg/L	2 mg/L	4 mg/L	3 mg/L
	4	San Isidro	Class SB	Swimming, fishing, household area	2 mg/L	-	-	3 mg/L	15 mg/L	<1 mg/L	3 mg/L	<1 mg/L	<1 mg/L	11 mg/L	3 mg/L

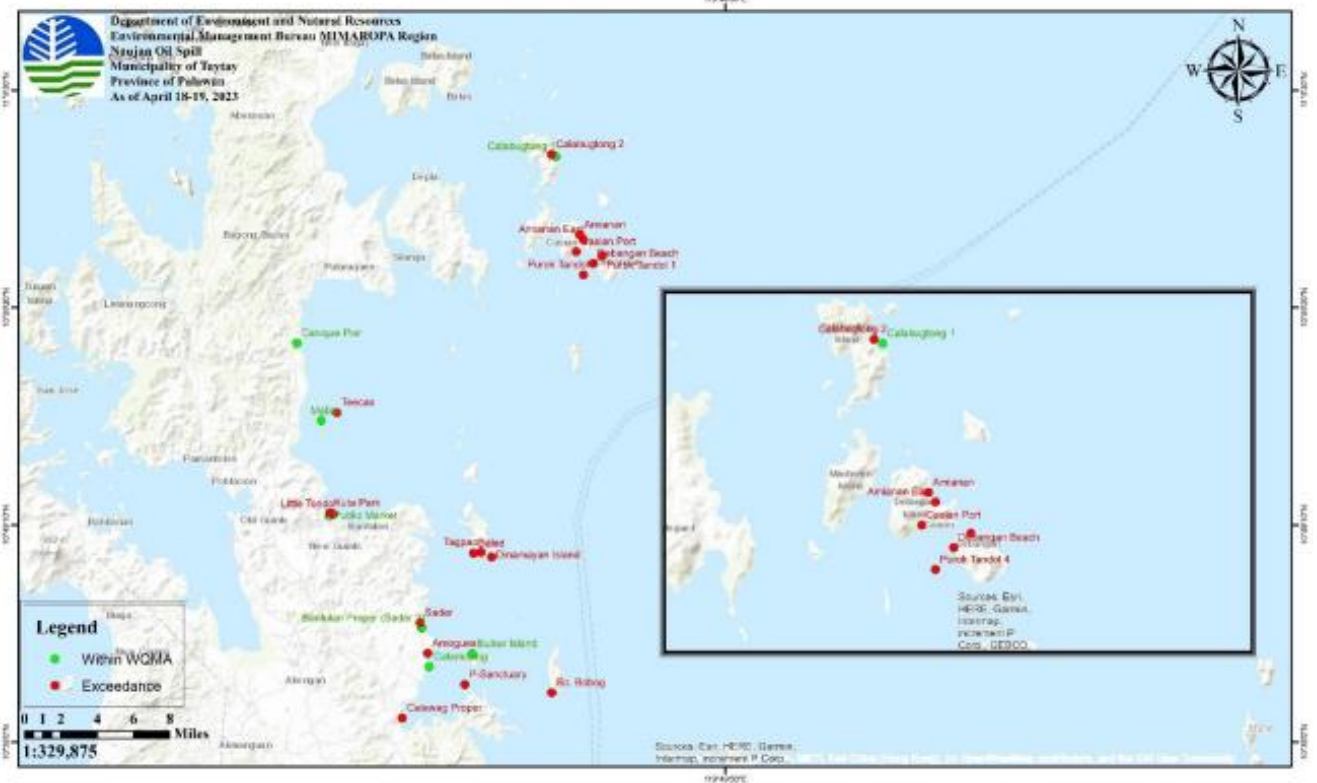
SAMPLING STATIONS AND RESULTS OF ANALYSIS – ROXAS, ORIENTAL MINDORO

(MARCH 13 TO April 17, 2023)

Source	Station No.	Station Identification	Classification	Current Beneficial Usage	WQG	Date of Sampling										
						March 13, 2023	March 14, 2023	March 15, 2023	March 16, 2023	March 19, 2023	March 21, 2023	March 23, 2023	March 25, 2023	March 27, 2023	April 2, 2023	April 17, 2023
Roxas Bay, Roxas, Oriental Mindoro	1	Dalahican	Class SB	Swimming, fishing, with household near the beach front	2 mg/L	22 mg/L	10 mg/L	4 mg/L	11 mg/L	3 mg/L	4 mg/L	<1 mg/L	9 mg/L	5 mg/L	5 mg/L	5 mg/L
	2	Dangay	Class SB	Swimming, fishing, household area	2 mg/L	5 mg/L	7 mg/L	8 mg/L	25 mg/L	10 mg/L	3 mg/L	<1 mg/L	5 mg/L	1 mg/L	2 mg/L	12 mg/L
	3	Paclasan	Class SB	Swimming, fishing, household area	2 mg/L	12 mg/L	15 mg/L	<1 mg/L	2 mg/L	18 mg/L	2 mg/L	1 mg/L	<1 mg/L	2 mg/L	5 mg/L	5 mg/L
	4	San Isidro	Class SB	Swimming, fishing, household area	2 mg/L	<1 mg/L	15 mg/L	23 mg/L	4 mg/L	<1 mg/L	5 mg/L	2 mg/L	1 mg/L	<1 mg/L	3 mg/L	6 mg/L

Coastline of San Teodoro, Oriental Mindoro	1	Punta Ilag Fish Sanctuary	Class SA	Fish sanctuary	1 mg/L	2 mg/L	5 mg/L	3 mg/L
	2	Between Tamayuan Reef and Bulaso Fish Sanctuary (MPA)	Class SA	Fish sanctuary	1 mg/L	3 mg/L	4 mg/L	9 mg/L

SAMPLING STATIONS AND RESULTS OF ANALYSIS – TAYTAY, PALAWAN



Brgy. Biton, Taytay, Palawan	1	Tagpao	Class SB	2 mg/L	-	18 mg/L	-	-	31 mg/L	-	5 mg/L	-	-	-	-	-	5 mg/L
	2	Baled	Class SB	2 mg/L	-	13 mg/L	-	-	17 mg/L	-	-	-	-	-	-	-	7 mg/L
	3	Dinamayan Island	Class SB	2 mg/L	-	40 mg/L	-	-	5 mg/L	-	22 mg/L	-	-	-	-	-	9 mg/L
Brgy. Bantulan, Taytay, Palawan	1	Sader	Class SC	3 mg/L	-	43 mg/L	-	28 mg/L	-	-	7 mg/L	-	43 mg/L	-	-	3 mg/L	-
	2	Bantulan Proper	Class SB	2 mg/L	-	13 mg/L	-	14 mg/L	-	-	14 mg/L	-	-	40 mg/L	-	3 mg/L	-
Brgy. Calawag, Taytay, Palawan	1	Amogues	Class SB	2 mg/L	-	3 mg/L	-	2 mg/L	-	-	5 mg/L	-	39 mg/L	-	-	7 mg/L	-
	2	Calampang	Class SC	3 mg/L	-	6 mg/L	-	6 mg/L	-	-	9 mg/L	-	35 mg/L	-	-	4 mg/L	-
	3	Calawag Proper	Class SC	3 mg/L	-	3 mg/L	-	3 mg/L	-	-	12 mg/L	-	22 mg/L	-	-	4 mg/L	-
	4	Amogues Deepwell			-	-	-	-	-	-	23 mg/L	-	-	-	-	-	-

Brgy. Baras, Taytay, Palawan	1	Ibubur Island	Class SD	5 mg/L	-	-	2 mg/L	-	5mg/L	-	33 mg/L	-	-	-	-	-	6 mg/L
	2	P-Sanctuary	Class SA	1 mg/L	-	-	4 mg/L	-	11 mg/L	-	33 mg/L	-	-	-	-	-	7 mg/L
	3	So. Bobog	Class SB	2 mg/L	-	-	-	-	-	-	26 mg/L	-	-	-	-	-	9 mg/L
Brgy. Poblacion, Taytay, Palawan	1	Little Tondo	Class SB	2 mg/L	-	-	3 mg/L	-	-	30 mg/L	-	-	-	32 mg/L	-	4 mg/L	-
	2	Public Market	Class SB	2 mg/L	-	-	3 mg/L	-	-	23 mg/L	-	-	-	16 mg/L	-	2 mg/L	-
	3	Kuta Park	Class SB	2 mg/L	-	-	-	20 mg/L	-	49 mg/L	-	-	-	22 mg/L	-	3 mg/L	-
Debanggan, Taytay, Palawan	1	Purok Tandol 1	Class SB	2 mg/L	-	-	-	-	17 mg/L	-	-	-	-	-	62 mg/L	-	7 mg/L
	2	Purok Tandol 4	Class SB	2 mg/L	-	-	-	-	41 mg/L	-	-	-	-	-	43 mg/L	-	3 mg/L
	3	Debanggan Beach	Class SB	2 mg/L	-	-	-	-	9 mg/L	-	-	-	-	-	17 mg/L	-	4 mg/L

Pularaqu en, Palawan	1	Canique Pier	Class SB	2	-	12 mg/L	-	-	-	-	-	31 mg/L	-	-	-	2 mg/L	-
----------------------------	---	--------------	----------	---	---	------------	---	---	---	---	---	------------	---	---	---	--------	---

SAMPLING STATIONS AND RESULTS OF ANALYSIS – TAYTAY, PALAWAN (APRIL 18 TO 19, 2023)

Source	Station No.	Station Identification	Classification	WQG	Date of Sampling	
					April 18, 2023	April 19, 2023
Pamantolon, Taytay, Palawan	1	Teecas	Class SA	1 mg/L	-	3 mg/L
	2	Maliao	Class SC	3 mg/L	-	3 mg/L
Casian, Taytay, Palawan	1	Casian Port	Class SB	2 mg/L	-	6 mg/L
	2	Amianan	Class SB	2 mg/L	-	4 mg/L
	3	Amninan East	Class SB	2 mg/L	-	4 mg/L
	4	Calubugtong 1	Class SB	2 mg/L	-	2 mg/L
	5	Calubugtong 2	Class SB	2 mg/L	-	4 mg/L
Brgy. Biton, Taytay, Palawan	1	Tagpao	Class SB	2 mg/L	-	5 mg/L
	2	Baled	Class SB	2 mg/L	-	7 mg/L
	3	Dinamayan Island	Class SB	2 mg/L	-	3 mg/L
Brgy. Bantulan, Taytay, Palawan	1	Sader	Class SC	3 mg/L	5 mg/L	-
	2	Sader 2 (Bantulan Proper)	Class SC	3 mg/L	2 mg/L	-
Brgy. Calawag, Taytay, Palawan	1	Amogues	Class SB	2 mg/L	6 mg/L	-
	2	Calampang	Class SC	3 mg/L	3 mg/L	-
	3	Calawag Proper	Class SC	3 mg/L	7 mg/L	-

Brgy. Baras, Taytay, Palawan	1	Ibubur Island	Class SD	5 mg/L	-	4 mg/L
	2	P-Sanctuary	Class SA	1 mg/L	-	6 mg/L
	3	So. Bobog	Class SB	2 mg/L	-	6 mg/L
Brgy. Poblacion, Taytay, Palawan	1	Little Tondo	Class SB	2 mg/L	4 mg/L	-
	2	Public Market	Class SB	2 mg/L	2 mg/L	-
	3	Kuta Park	Class SB	2 mg/L	3 mg/L	-
Debangan, Taytay, Palawan	1	Purok Tandol 1	Class SB	2 mg/L	-	5 mg/L
	2	Purok Tandol 4	Class SB	2 mg/L	-	3 mg/L
	3	Debangan Beach	Class SB	2 mg/L	-	3 mg/L
Pularaquen, Palawan	1	Canique Pier	Class SB	2 mg/L	1 mg/L	-

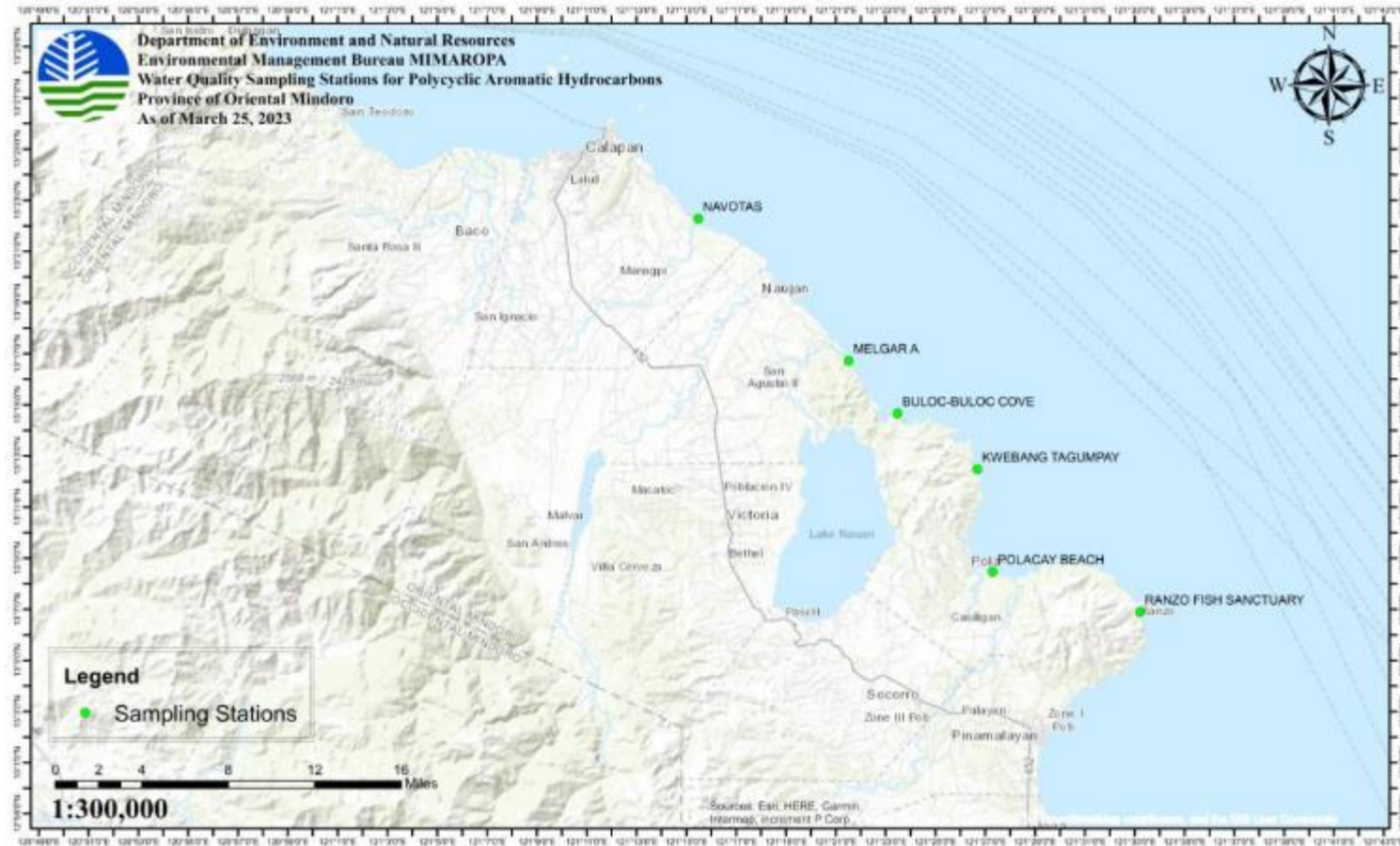
MAP OF VOLATILE ORGANIC COMPOUNDS IN WATER AS OF 28-29 MARCH 2023



RESULTS OF VOLATILE ORGANIC COMPOUNDS IN WATER AS OF 28-29 MARCH 2023

PROVINCE	LOCATION	SOURCE OF WATER	SAMPLE IDENTIFICATION	PARAMETERS (mg/L)			
				BENZENE	TOLUENE	ETHYLBENZENE	XYLENES
ORIENTAL MINDORO	NAUJAN	GROUNDWATER	MELGAR A	< 0.005	< 0.005	< 0.005	< 0.005
		RIVER WATER	BULUACAN RIVER	< 0.005	< 0.005	< 0.005	< 0.005
		RIVER WATER	MAG ASAWANG TUBIG	< 0.005	< 0.005	< 0.005	< 0.005
		SEAWATER	MASAGUING FISH SANCTUARY	< 0.005	< 0.005	< 0.005	< 0.005
	POLA	GROUNDWATER	CALIMA	< 0.005	< 0.005	< 0.005	< 0.005
		GROUNDWATER	MISONG	< 0.005	< 0.005	< 0.005	< 0.005
		RIVER WATER	CASILIGAN RIVER	< 0.005	< 0.005	< 0.005	< 0.005

		RIVER WATER	PULA RIVER	< 0.005	< 0.005	< 0.005	< 0.005
		SEAWATER	POLACAY	< 0.005	< 0.005	< 0.005	< 0.005
	PINAMALAYAN	GROUNDWATER	MARFRANCISCO	< 0.005	< 0.005	< 0.005	< 0.005
		RIVER WATER	PINAMALAYAN RIVER	< 0.005	< 0.005	< 0.005	< 0.005
		SEAWATER	RANZO FISH SANCTUARY	< 0.005	< 0.005	< 0.005	< 0.005



RESULTS OF POLYCYCLIC AROMATIC HYDROCARBONS IN WATER AS OF 25 MARCH 2023

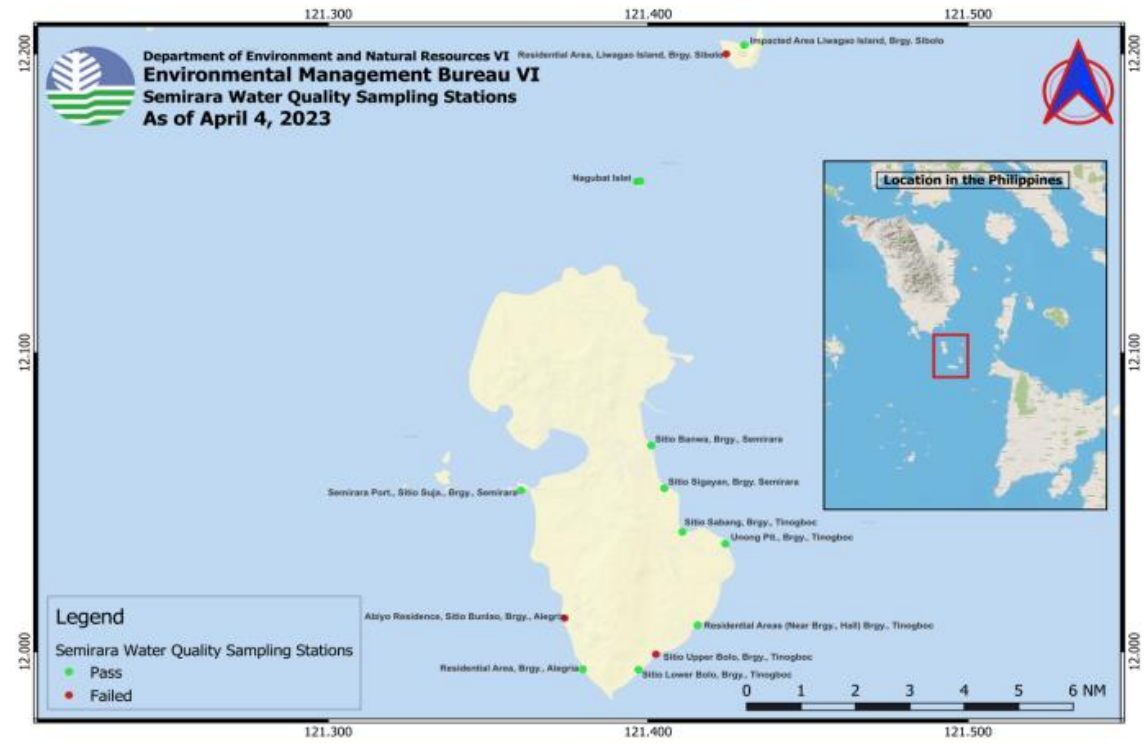
Province: Oriental Mindoro
Source of Water: Marine Water

Region 6 Water Quality Monitoring Results for Oil and Grease

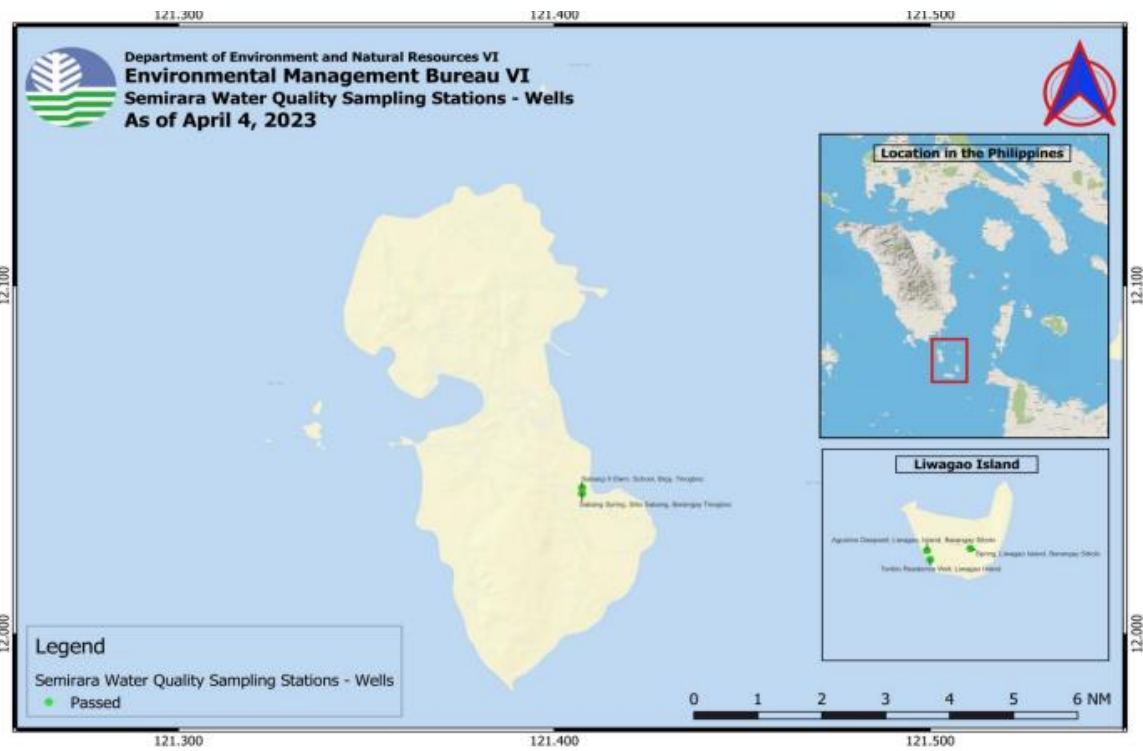
Sampling Station	Previous Sampling Results (mg/L)				Latest Sampling Results (mg/L)	Water Quality Guidelines (WQG) (Table 6 of DAO 2016-08 for Class SC or Class B)	Remarks on Recent Sampling Results
	Mar. 5, 2023	Mar. 14-16, 2023	March 21-23, 2023	March 28-30, 2023			
Station 1: Sitio Banwa, Barangay Semirara	2	3	3	4	3	3	WITHIN WQG
Station 2: Sitio Sigayan, Barangay Semirara	2	4	3	3	2	3	WITHIN WQG
Station 3: Sitio Sabang, Barangay Tinogboc	35	4	6	3	3	3	WITHIN WQG
Station 4: Unong Pit, Barangay Tinogboc	6	9	4	4	2	3	WITHIN WQG
Station 5: Residential	5	4	3	3	3	3	WITHIN WQG

Areas (near Barangay Hall) of Barangay 3Tinogboc							
Station 6: Sitio Upper Bolo, Barangay Tinogboc,	6	3	3	4	4	3	EXCEEDED WQG
Station 7: Sitio Lower Bolo, Barangay Tinogboc	5	4	5	3	2	3	WITHIN WQG
Station 8: Residential Area, Barangay Alegria	6	3	5	5	3	3	WITHIN WQG
Station 9: Abiyo Residence, Sitio Bunlao, Barangay Alegria	6	4	3	5	5	3	EXCEEDED WQG
Station 10: Old Port, Sitio Suja, Barangay Semirara	7	3	4	3	2	3	WITHIN WQG
Station 11: Impacted	No sampling	4	2	No sampling	3	3	WITHIN WQG

Area Liwagao Island, Brgy. Sibolo				due to bad weather condition			
Station 12: Residential Area, Liwagao Island, Brgy. Sibolo	No sampling	3	5	No sampling due to bad weather condition	4	3	EXCEEDED WQG
Station 13: Near Impacted Area, Nagubat Island	-	-	-	-	3	3	WITHIN WQG
Station 14: Beach Area – Near Impacted Area, Nagubat Island	-	-	-	-	3	3	WITHIN WQG
Well 1 Sabang II Elem. School, Brgy. Tinogboc	No sampling	4	4	3	3	1	EXCEEDED WQG



Water Quality Monitoring in Semirara Island, Region VI



Water Quality Monitoring in Semirara Island Wells, Region VI

AIR QUALITY MONITORING

Using the parameters of H₂S (Hydrogen Sulfide) and TVOC / VOC (Total VOC /Volatile Organic Compounds) for air quality monitoring, the following were observed:

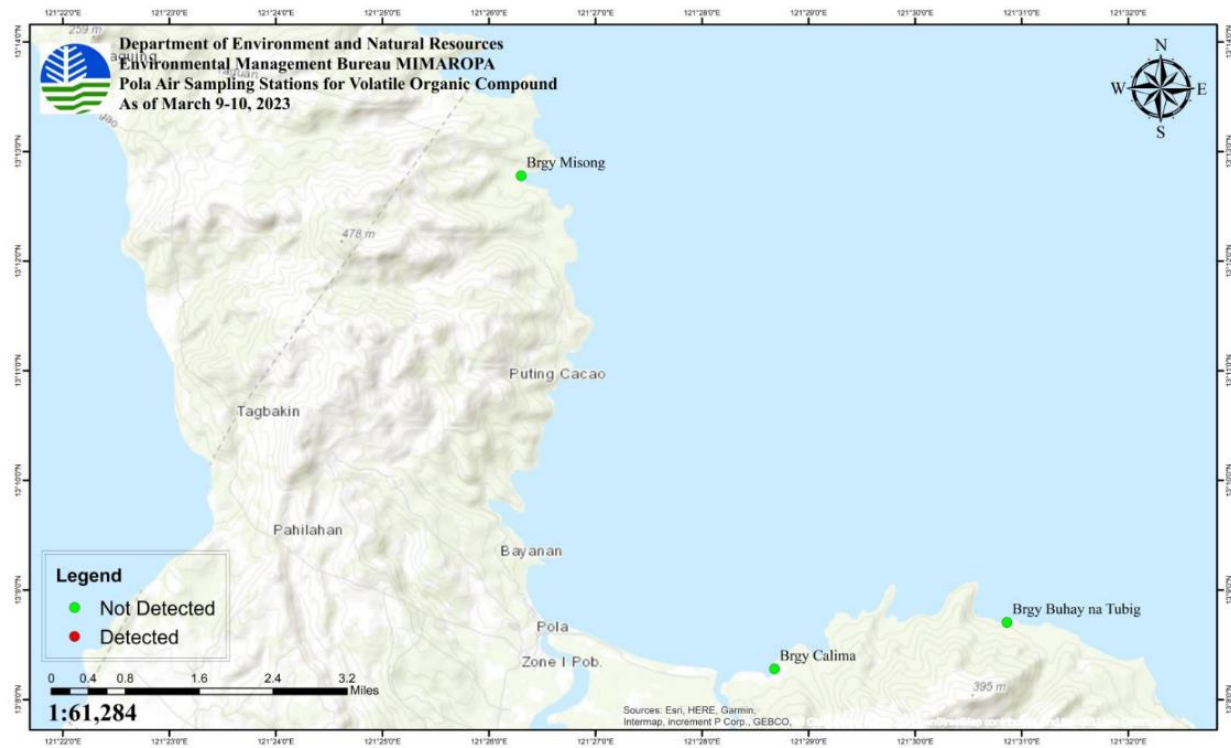
REGION	PROVINCE	AREAS COVERED	NO. OF SAMPLING STATIONS						DATE OF LAST SAMPLING CONDUCTED	
			TOTAL STATIONS	H ₂ S		VOCs (Laboratory)		TVOC (In-Situ)		
				NOT DETECTED	DETECTED	NOT DETECTED	DETECTED	NOT DETECTED		DETECTED
IVA	BATANGAS	BATANGAS CITY (ISLA VERDE)	2	2	0	2	0	-	-	Mar 22
		TOTAL	2	2	0	2	0	-	-	
IVB	ORIENTAL MINDORO	CALAPAN CITY	1	0	1	1	0	1	0	H ₂ S and TVOC: 25 March 2023
	ORIENTAL MINDORO	NAUJAN	1	0	1	1	0	1	0	H ₂ S and TVOC: 25 March 2023
	ORIENTAL MINDORO	POLA	4	0	4	7	0	7	4	H ₂ S: 17 and 24 March 2023; TVOC: 20 April 2023; VOC: 9-10 March 2023
	ORIENTAL MINDORO	PINAMALAYAN	3	0	3	3	0	3	0	H ₂ S and TVOC: 23 March 2023
		TOTAL	9	0	9	12	0	12	4	
VI	ANTIQUE	CALUYA	5	5	0	5	0	-	-	April 11-13
		TOTAL	5	5	0	5	0	-	-	
GRAND TOTAL			16	7	9	19	4	12	4	

Table 4: Air Quality Monitoring in Regions IVA, IVB and VI



Air Quality Monitoring in Verde Island (H₂S and VOC), Region IVA

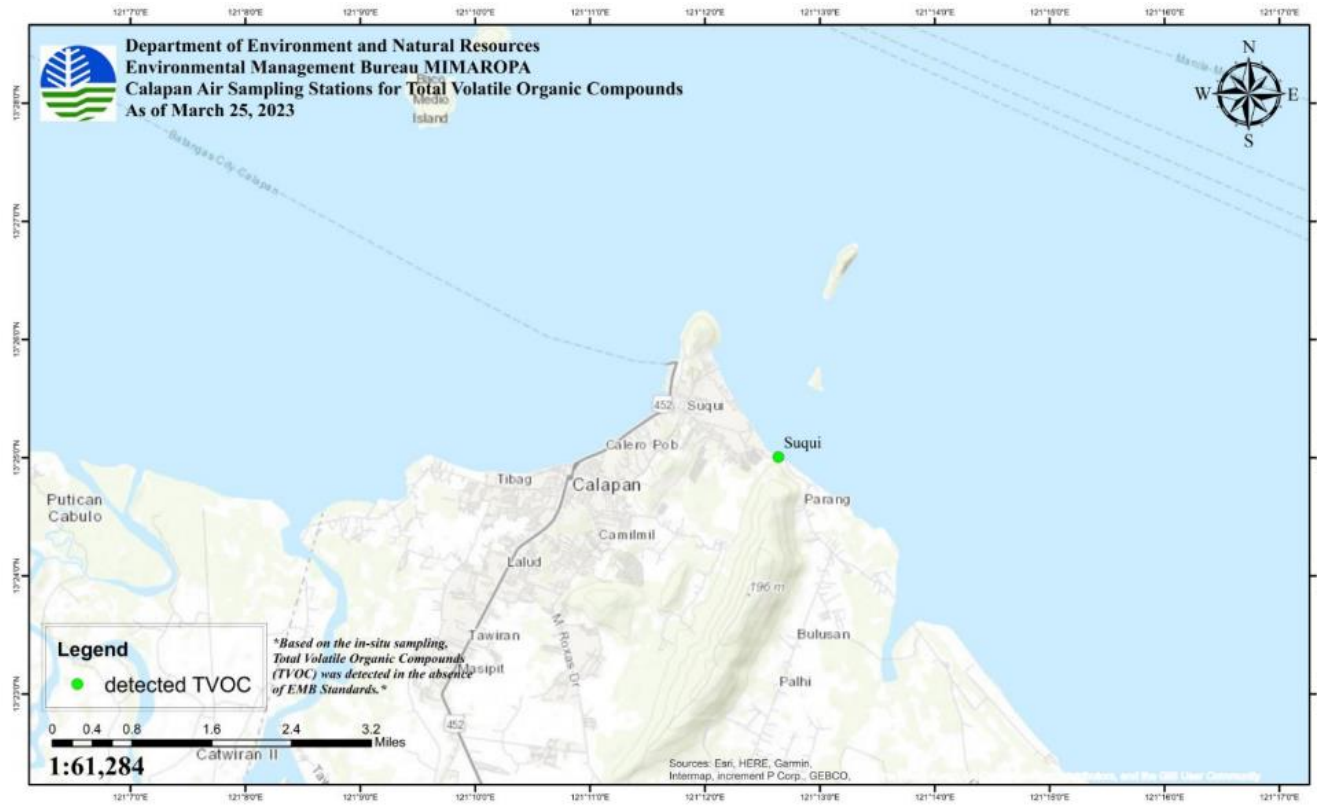
MAP OF VOLATILE ORGANIC COMPOUND IN POLA, ORIENTAL MINDORO (MARCH 9 TO April 20, 2023)



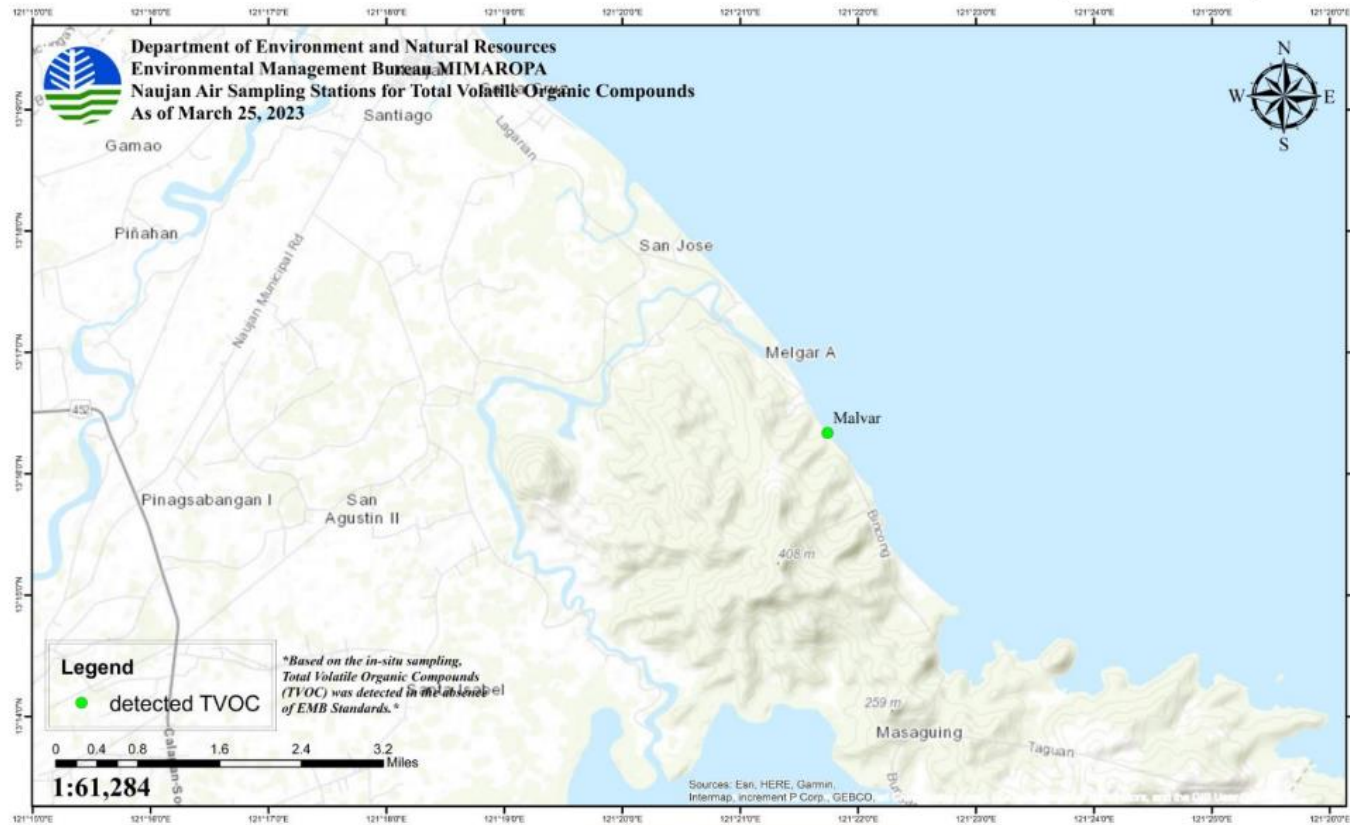
Results of Total Volatile Organic Compounds (TVOCs) on March 15-April 20, 2023 Sampling

PROVINCE	SOURCE (Municipality/City)	LOCATION (Barangay)	TVOC (mg/m³)	DATE OF SAMPLING
ORIENTAL MINDORO	POLA	BRGY. CALIMA	0.015	15 March 2023
			0.046	16 March 2023
			0.017	17 March 2023
			0.024	24 March 2023
			0.046	20 April 2023
		BRGY. MISONG	0.011	16 March 2023
			0.018	17 March 2023
			0.023	24 March 2023
			0.011	20 April 2023
		BRGY. BATUHAN – POLACAY BEACH	0.024	24 March 2023
			0.018	20 April 2023
		BRGY. TAGUMPAY	0.018	16 March 2023
			0.013	17 March 2023
		BRGY. TAGUMPAY – CUEBA	0.022	20 April 2023
	BRGY. TAGUMPAY – CENTRAL	0.026	20 April 2023	
	BRGY. TUGUIHAN	0.015	20 April 2023	
	BRGY. BUHAY NA TUBIG	0.011	20 April 2023	
	NAUJAN	BRGY. MALVAR	0.014	25 March 2023
	PINAMALAYAN	BRGY. PARAISO	0.011	23 March 2023
		BRGY. GINHAWA	0.023	23 March 2023
BRGY. BANILAD		0.024	23 March 2023	
CALAPAN	BRGY. SUQUI	0.022	25 March 2023	

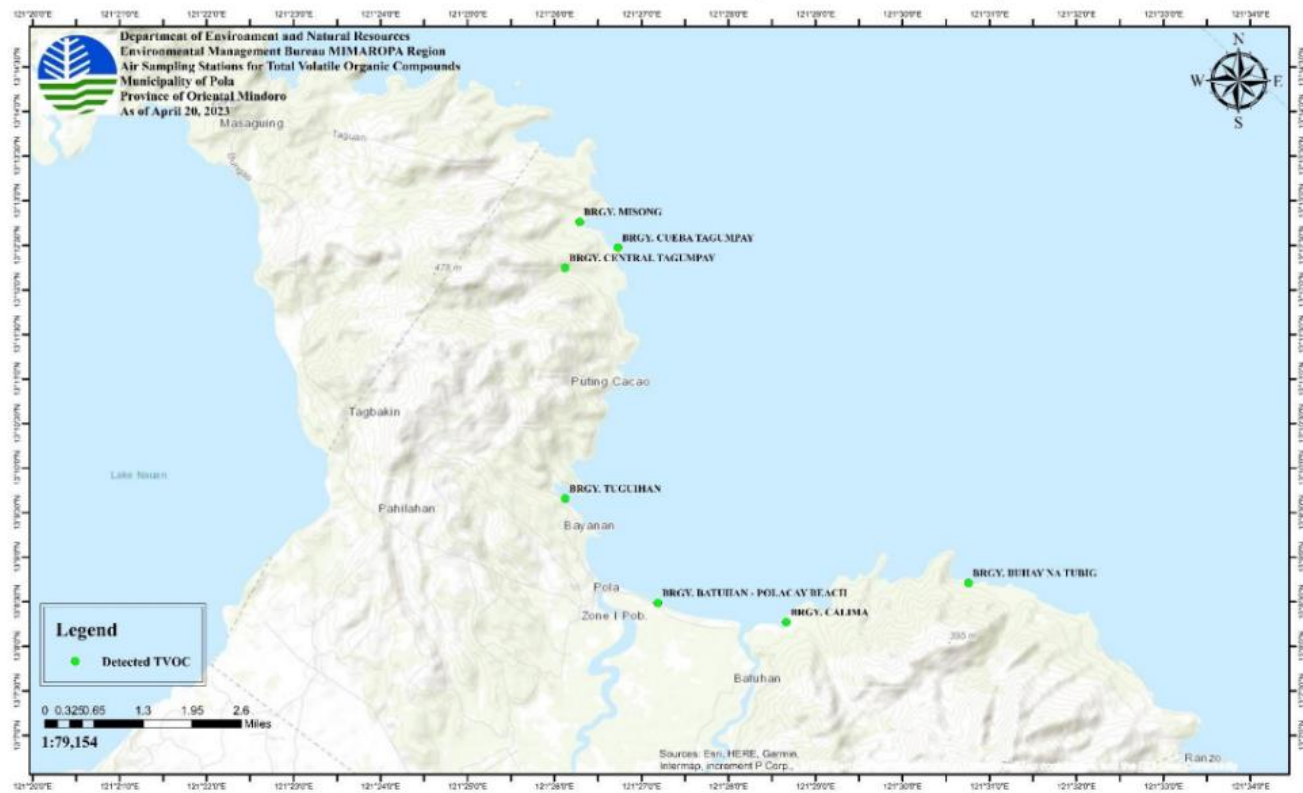
MAP OF TOTAL VOLATILE ORGANIC COMPOUND IN CALAPAN CITY, ORIENTAL MINDORO (MARCH 25, 2023)



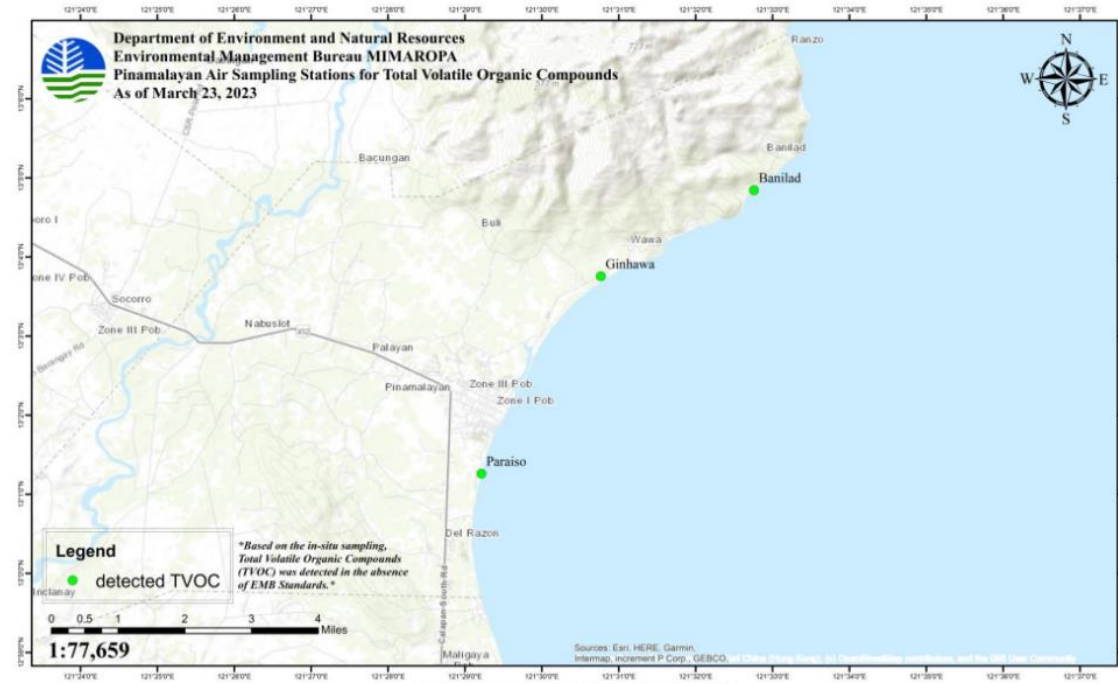
MAP OF TOTAL VOLATILE ORGANIC COMPOUND IN NAUJAN, ORIENTAL MINDORO (MARCH 25, 2023)



MAP OF TOTAL VOLATILE ORGANIC COMPOUND IN POLA, ORIENTAL MINDORO (20 April 2023)



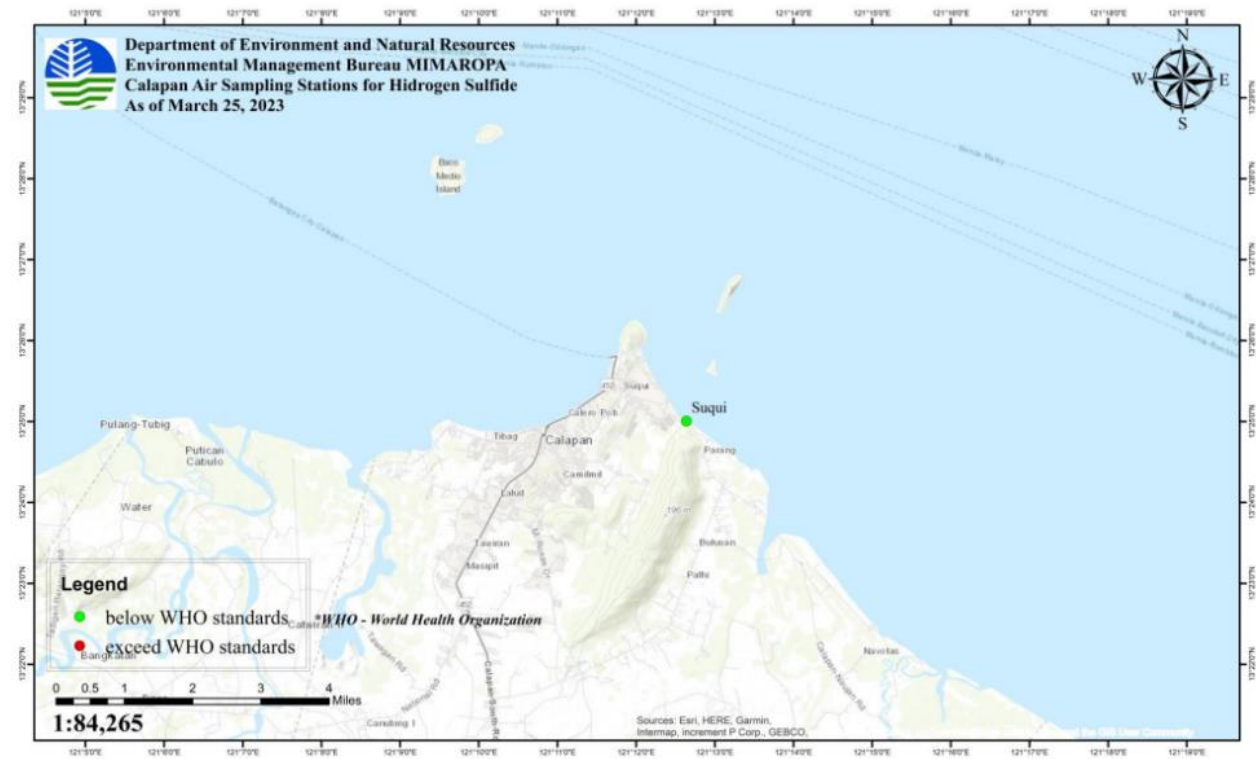
MAP OF TOTAL VOLATILE ORGANIC COMPOUND IN PINAMALAYAN, ORIENTAL MINDORO (MARCH 23, 2023)



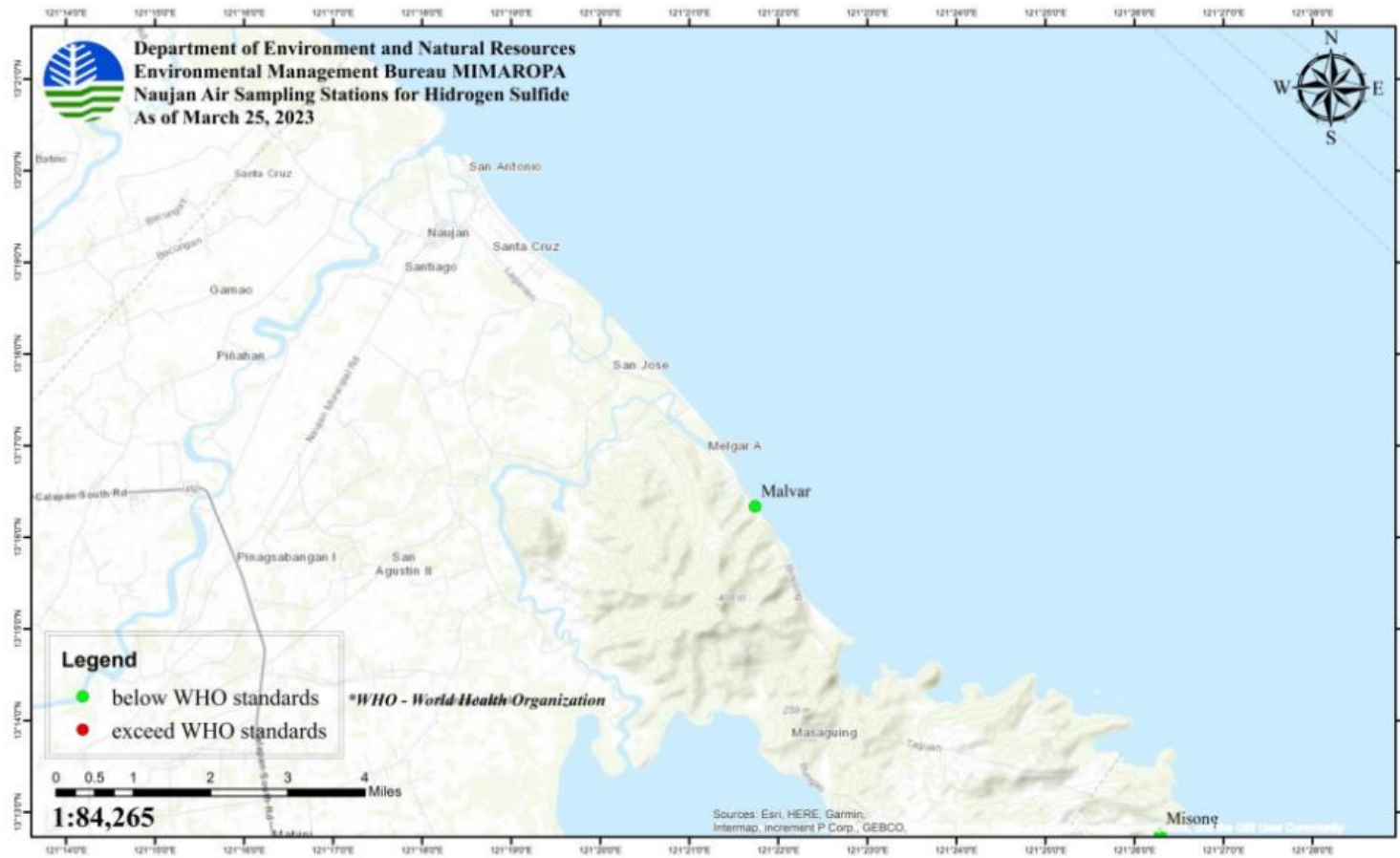
Results of Hydrogen Sulfide (H₂S) on March 15-25, 2023 Sampling

PROVINCE	SOURCE (Municipality/City)	LOCATION (Barangay)	H₂S (ppm)	DATE OF SAMPLING
ORIENTAL MINDORO	POLA	BRGY. CALIMA	0.03	15 March 2023
			0.03	16 March 2023
			0.03	17 March 2023
			0.01	24 March 2023
		BRGY. MISONG	0.04	16 March 2023
			0.04	17 March 2023
			0.01	24 March 2023
		BRGY. BATUHAN	0.02	24 March 2023
	BRGY. TAGUMPAY	0.02	16 March 2023	
		0.02	17 March 2023	
	NAUJAN	BRGY. MALVAR	0.04	25 March 2023
	PINAMALAYAN	BRGY. PARAISO	0.02	23 March 2023
	PINAMALAYAN	BRGY. GINHAWA	0.03	23 March 2023
	PINAMALAYAN	BRGY. BANILAD	0.05	23 March 2023
CALAPAN	BRGY. SUQUI	0.02	25 March 2023	

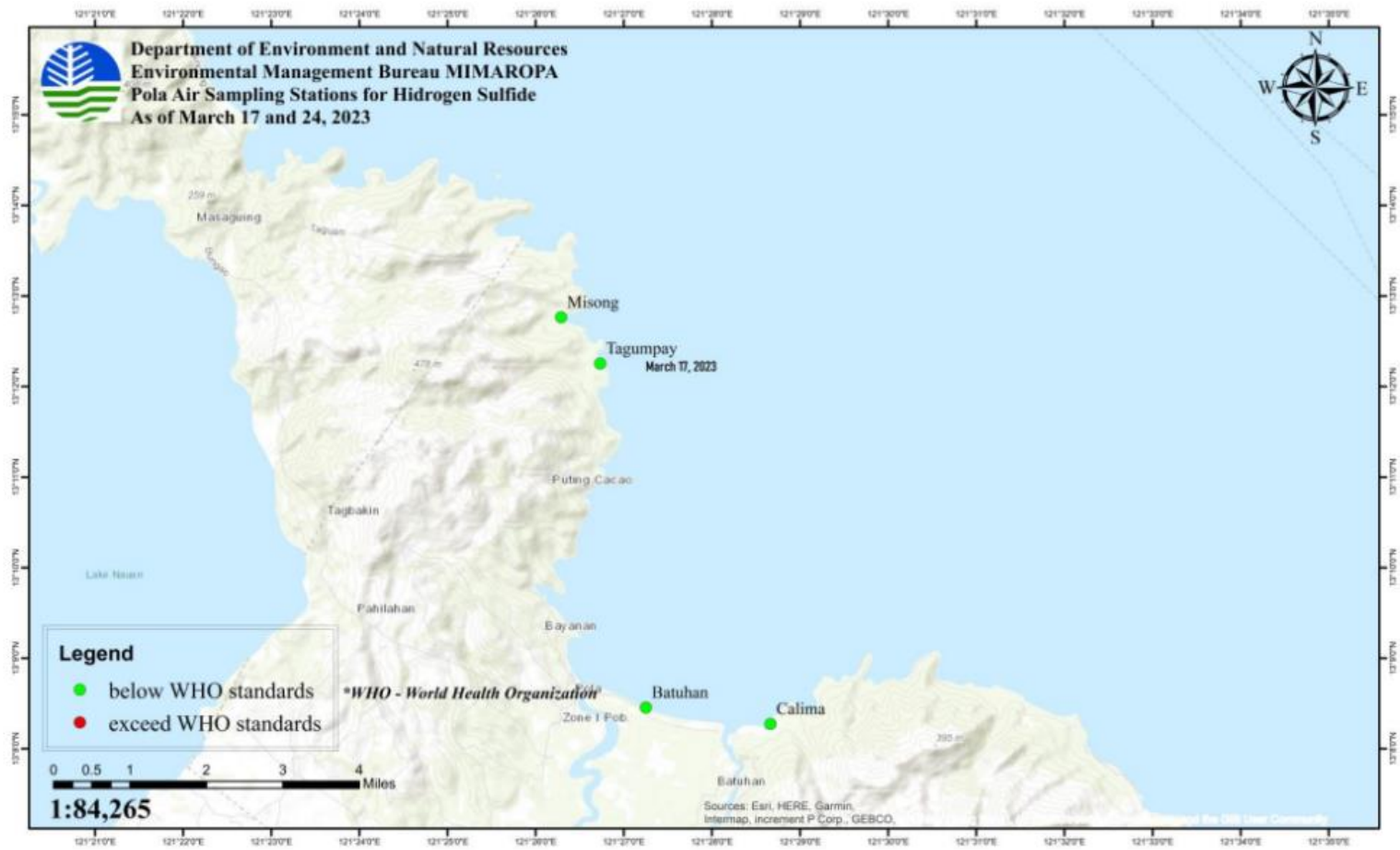
MAP OF HYDROGEN SULFIDE IN AIR SAMPLING OF CALAPAN CITY, ORIENTAL MINDORO (MARCH 25, 2023)



MAP OF HYDROGEN SULFIDE IN AIR SAMPLING OF NAUJAN, ORIENTAL MINDORO (MARCH 25, 2023)



MAP OF HYDROGEN SULFIDE IN AIR SAMPLING OF POLA, ORIENTAL MINDORO (MARCH 17 TO 24, 2023)





Region 6 Water Quality Monitoring Results for Oil and Grease

Water Quality Monitoring Results for Oil and Grease

Regular Sampling Station	Sampling Results (mg/L)						Water Quality Guidelines (WQG) (Table 6 of DAO 2016-08 for Class SC or Class B)	Remarks on Recent Sampling Results
	Mar. 5, 2023	Mar. 14-16, 2023	March 21-23, 2023	March 28-30, 2023	April 3-5, 2023	April 11 – 12, 2023		
Station 1: Sitio Banwa, Barangay Semirara	2	3	3	4	3	2	3	WITHIN WQG
Station 2: Sitio Sigayan, Barangay Semirara	2	4	3	3	2	3	3	WITHIN WQG
Station 3: Sitio Sabang, Barangay Tinogboc	35	4	6	3	3	2	3	WITHIN WQG
Station 4: Unong Pit, Barangay Tinogboc	6	9	4	4	2	3	3	WITHIN WQG

Station 5: Residential Areas (near Barangay Hall) of Barangay Tinogboc	5	4	3	3	3	1	3	WITHIN WQG
Station 6: Sitio Upper Bolo, Barangay Tinogboc,	6	3	3	4	4	2	3	WITHIN WQG
Station 7: Sitio Lower Bolo, Barangay Tinogboc	5	4	5	3	2	2	3	WITHIN WQG
Station 8: Residential Area, Barangay Alegria	6	3	5	5	3	5	3	EXCEEDED WQG
Station 9: Abiyo Residence, Sitio Bunlao, Barangay Alegria	6	4	3	5	5	For Resampling	3	--
Station 10: Old Port, Sitio Suja, Barangay Semirara	7	3	4	3	2	1	3	WITHIN WQG
Station 11: Impacted Area Liwagao Island, Brgy. Sibolo	No sampling	4	2	No sampling due to bad weather condition	3	For Resampling	3	WITHIN WQG
Station 12: Residential Area, Liwagao Island, Brgy. Sibolo	No sampling	3	5	No sampling due to bad weather condition	4	1	3	WITHIN WQG
Station 13: Near Impacted Area, Nagubat Island	-	-	-	-	3	No sampling	3	WITHIN WQG

Station 14: Beach Area – Near Impacted Area, Nagubat Island	-	-	-	-	3	No sampling	3	WITHIN WQG
--	---	---	---	---	---	-------------	---	------------

Deep Well Sampling Station	Sampling Results (mg/L)						Water Quality Guidelines (WQG) (Table 6 of DAO 2016-08 for Class SC or Class B)	Remarks on Recent Sampling Results
	Mar. 5, 2023	Mar. 14-16, 2023	March 21-23, 2023	March 28-30, 2023	April 3-5, 2023	April 11 – 12, 2023		
Well 1 Sabang II Elem. School, Brgy. Tinogboc	No sampling	4	4	3	3	3	1	EXCEEDED WQG
Well 2 Sabang Spring, Sitio Sabang, Barangay Tinogboc	No sampling	3	2	3	3	1	1	WITHIN WQG
Well 3 Agustin's Deepwell, Liwagao, Island, Barangay Sibolo	No sampling	4	2	No sampling due to bad weather condition	3	2	1	EXCEEDED WQG
Well 4 Said Spring, Liwagao Island, Barangay Sibolo	No sampling	2	3	No sampling due to bad weather condition	3	2	1	EXCEEDED WQG
Well 5 Toribio Residence Well, Liwagao Island	No sampling	No sampling	4	No sampling due to bad weather condition	3	2	1	EXCEEDED WQG

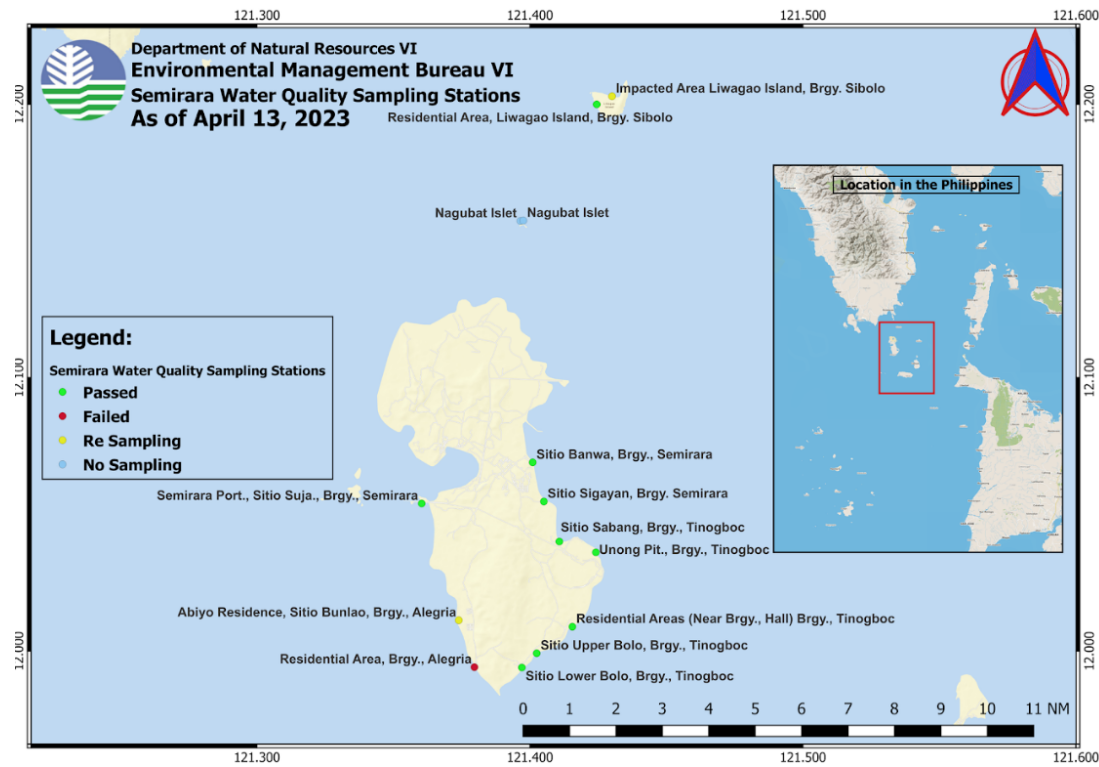
Clean Up Sector Sampling Station	Sampling Results (mg/L)	Water Quality Guidelines (WQG) (Table 6 of DAO 2016-08 for Class SC or Class B)	Remarks on Recent Sampling Results
	April 11 – 12, 2023		
Sector A Sitio Sabang, Barangay Tinogboc, Caluya, Antique	5	1	EXCEEDED WQG
Sector D Sitio Sabang, Barangay Tinogboc, Caluya, Antique	3	1	EXCEEDED WQG
Sector F Sitio Sabang, Barangay Tinogboc, Caluya, Antique	41	1	EXCEEDED WQG
Sector G Sitio Sabang, Barangay Tinogboc, Caluya, Antique	2	1	WITHIN WQG

Ambient Air Quality Monitoring Results

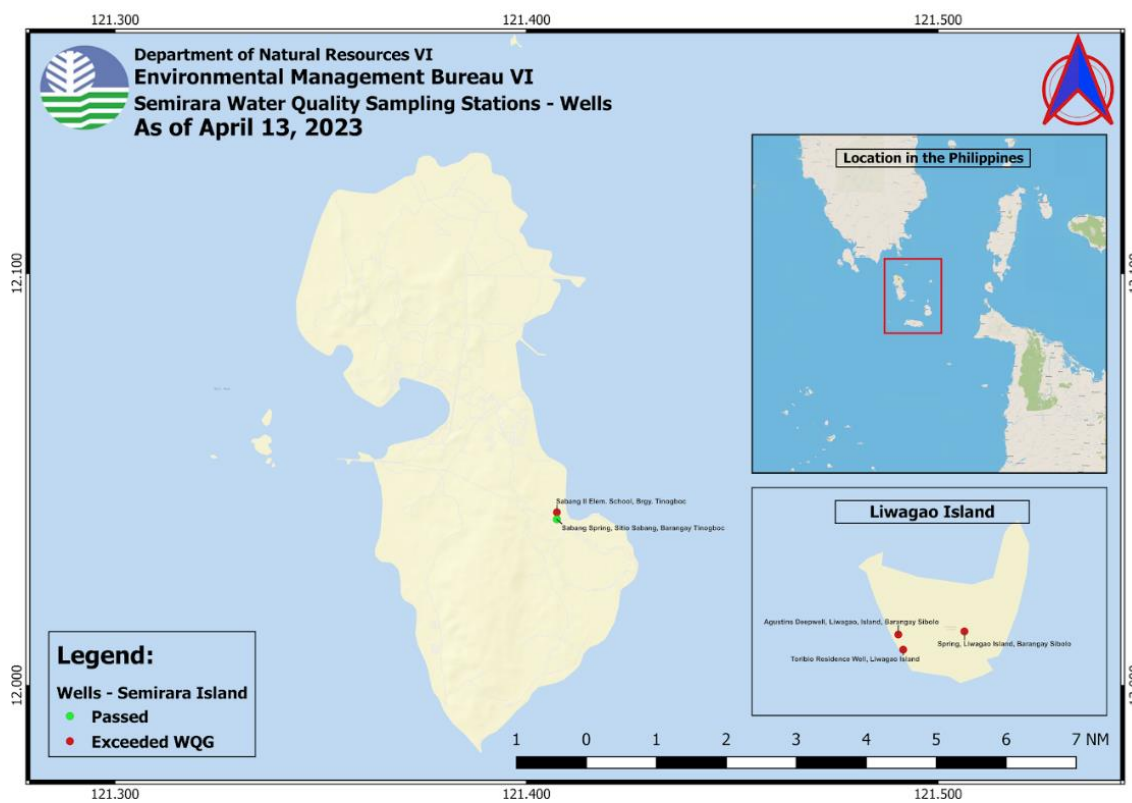
Parameters	Sampling Station	Results					Unit	Averaging Time
		March 14 - 16, 2023	March 21-23, 2023	March 28-30, 2023	April 3 – 5, 2023	April 11-13, 2023		
Carbon Monoxide, Hydrogen Sulfide, Isobutylene and Methane	Sta. 3, Sitio Sabang, Brgy. Tinogboc							
	Beach Area	Zero Detection	Zero Detection	Zero Detection	Zero Detection	Zero Detection	ppm	30 mins
	Residential Area	Zero Detection	Zero Detection	Zero Detection	Zero Detection	Zero Detection	ppm	30 mins
	Temporary Storage Area	Zero Detection	Zero Detection	Zero Detection	Zero Detection	Zero Detection	ppm	30 mins
	Station 9, Abiyo Residence, Sitio, Bunlao, Brgy. Alegria							

	Beach Area	Zero Detection	Zero Detection	Zero Detection	Zero Detection	Zero Detection	ppm	30 mins
	Residential Area	Zero Detection	Zero Detection	Zero Detection	Zero Detection	Zero Detection	ppm	30 mins
Station 10 Old Port, Sitio Suja, Barangay Semirara								
	Old Port Area	Zero Detection	Zero Detection	Zero Detection	Zero Detection	Zero Detection	ppm	30 mins
Station 11 Liwagao Island, Barangay Sibolo								
	Beach Area	Zero Detection	Zero Detection	No sampling	Zero Detection	Zero Detection	ppm	30 mins

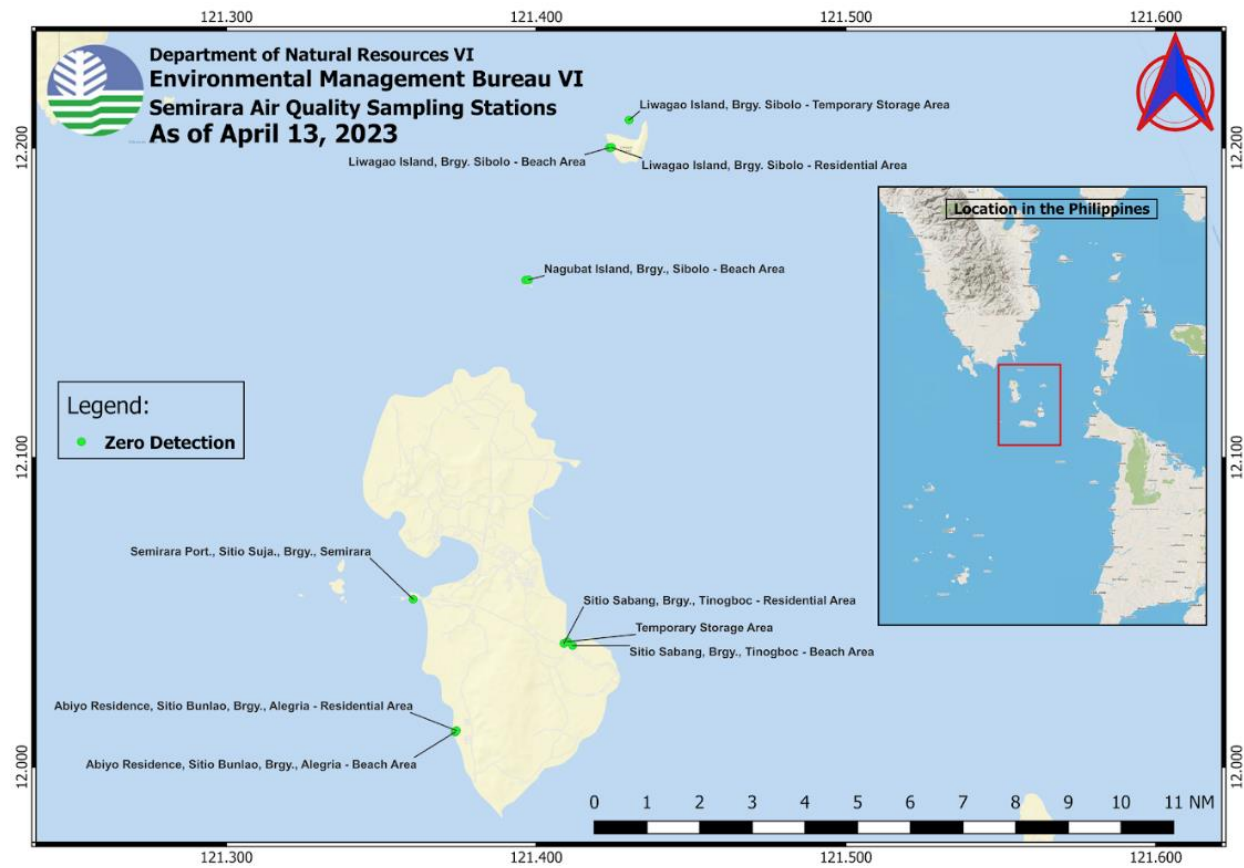
	Residential Area (near Liwagao Elem. School)	Zero Detection	Zero Detection	No sampling	Zero Detection	Zero Detection	ppm	30 mins
	Temporary Storage Area	Zero Detection	Zero Detection	No sampling	Zero Detection	Zero Detection	ppm	30 mins
Station 13 Nagubat Island, Barangay Sibolo								
	Beach Area – Near Impacted Area	N/A	N/A	N/A	N/A	Zero Detection	ppm	30 mins
	Beach Area – Near Impacted Area	N/A	N/A	N/A	N/A	Zero Detection	ppm	30 mins



Water Quality Monitoring in Semirara Island , Region VI



Deepwell Water Quality Monitoring in Semirara Island , Region VI



Air Quality Monitoring in Semirara Island (H₂S and VOC), Region VI