

## SOLID WASTE MANAGEMENT



The Philippines has endeavored to improve its management of solid waste through RA 9003 or the “Ecological Solid Waste Management Act” that provides a systematic, comprehensive and ecological waste management program to ensure the protection of public health and the environment. It mandates the EMB to provide secretariat support to the National Solid Waste Management Commission in the implementation of the solid waste management plans and prescribe policies. Among the activities are the development of the 10-year SWM Plan of the LGUs, closure and rehabilitation of dumpsites and establishment of Materials Recovery Facilities.

### Facilitation and Approval of the 10-Year Solid Waste Management Plans (SWMPs)

Section 16 of RA 9003 requires that “provinces, cities or municipalities, through their local solid waste management boards, shall prepare their respective 10-year Solid Waste Management Plans (SWMPs) consistent with the National Solid Waste Management Framework”. The SWMP shall contain all the components provided in Section 17 of the Act including the corresponding timetable for the implementation of the solid waste management program.

All SWMPs submitted by the Local Government Units (LGUs) shall be subjected to the approval of the National Solid Waste Management Commission (NSWMC). Prior to the approval, the SWMPs shall be reviewed and evaluated by the NSWMC Secretariat and endorsed to the NSWMC-Executive Committees for deliberation and subsequent endorsement to the NSWMC for approval.

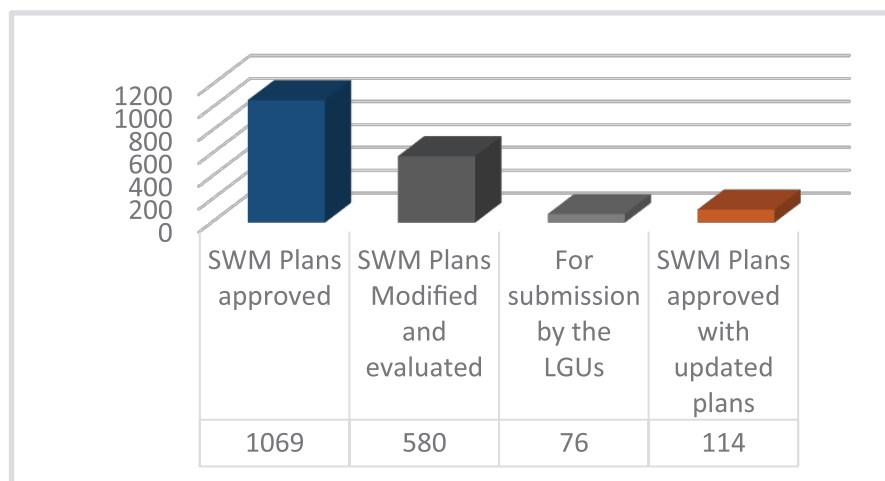


Figure 6.1 Solid Waste Management Plans submitted

Figure 6.1 shows that of the 1,715 submitted SWM Plans, 1,069 SWM plans were approved; 580 SWMPs currently being modified and evaluated; and 76 of which are still to be submitted by the LGUs mostly from BARMM. Also, 114 approved SWMPs include the updated Plans that were previously approved by the NSWMC. These activities were conducted through joint review and cooperation among the EMB-SWMD Central Office, the ESWM Sections of the EMB Regional Offices and BARMM in close coordination with the LGUs.

### Support in the Establishment of Materials Recovery Facility (MRF)

This program aims to provide support to LGUs in the establishment of MRFs. The Guidelines on the downloading of funds for the support in the establishment of MRFs and procurement/fabrication of SWM equipment was issued to all EMB Regional Offices. In CY 2020, additional 824 MRFs were established which brings to the total of 11,546 MRFs established servicing 14,450 barangays nationwide

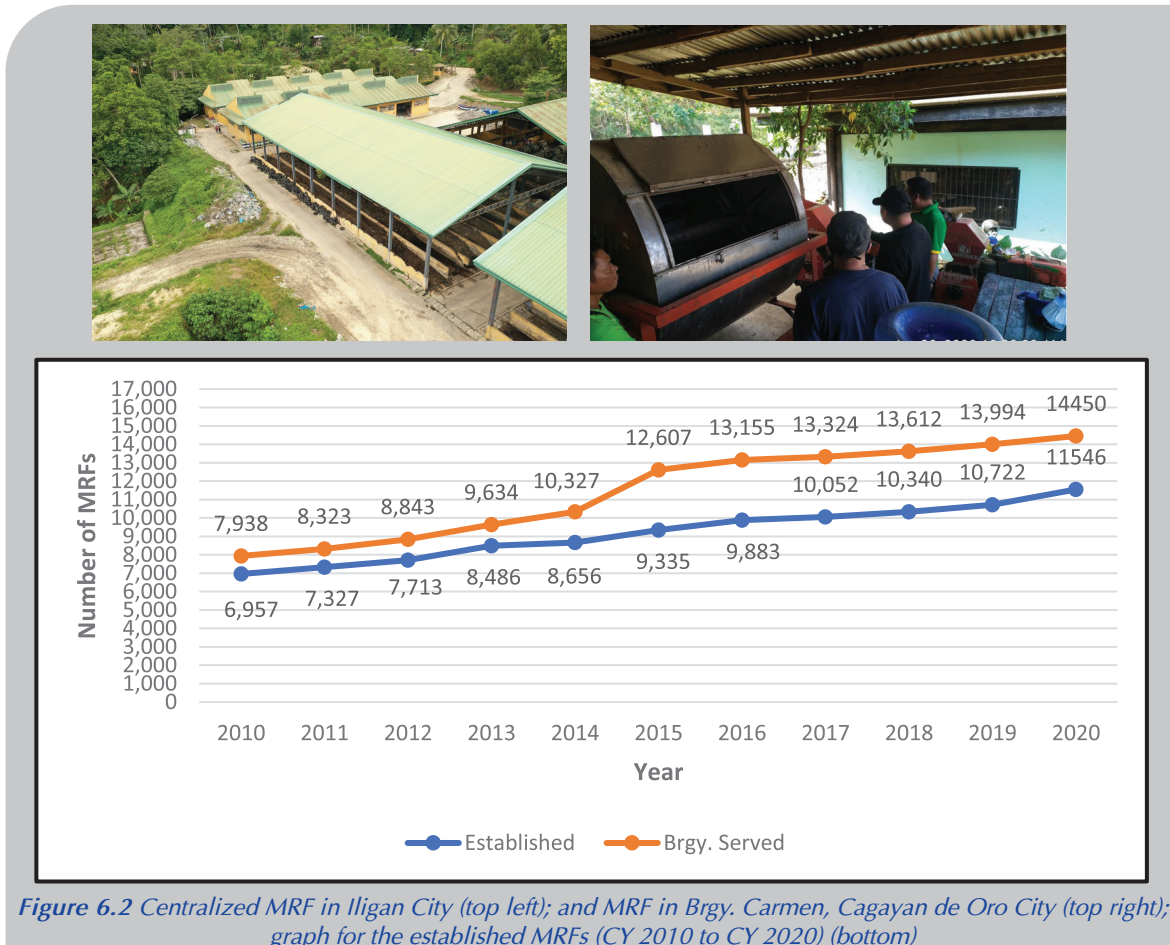


Figure 6.2 Centralized MRF in Iligan City (top left); and MRF in Brgy. Carmen, Cagayan de Oro City (top right); graph for the established MRFs (CY 2010 to CY 2020) (bottom)

### Technical Assistance in the Closure and Rehabilitation of Illegal Dumpsites

The imposition of the Enhanced Community Quarantine (ECQ) since March 2020 due to COVID-19 pandemic drastically affected the monitoring activities of the Bureau due to travel restrictions. It prevented some regional offices to inspect operating illegal dumpsites within their jurisdiction. Despite the said restrictions, they were able to comply and submit matrices to the Central Office using online platforms (i.e. IIS, Email, Facebook Messenger, MS Teams, and Zoom) that greatly helped and eased transaction with other offices.

On the other hand, the following challenges were encountered by the LGUs which led to open dumping practices:

- There were established MRFs and proposed sanitary landfills near the dumpsites but not operational;
- Illegal dumpsites sometimes served as transfer stations in some LGUs;
- Lack of Residual Containment Areas (RCAs); and
- Closure of open dumpsites is not a priority for some LGUs.

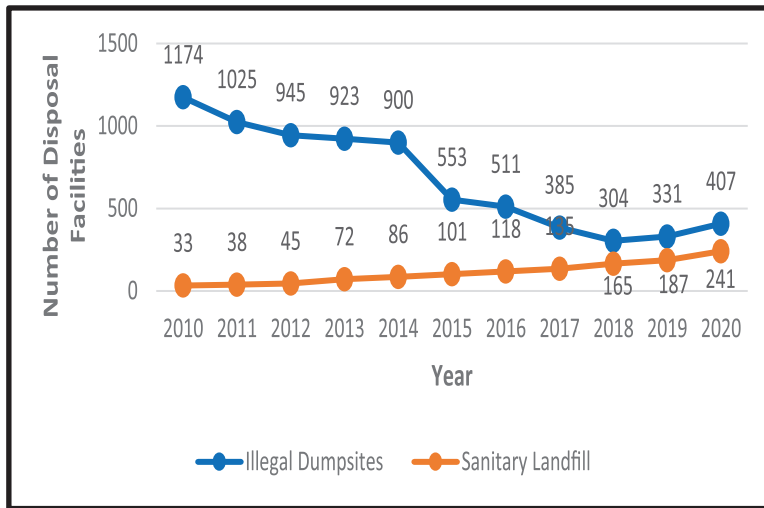


Figure 6.3 Disposal Facilities Nationwide (CY 2010 – CY 2020)

### Maintenance of Old San Mateo Landfill

This project is aimed at maintaining and repairing the structure of the Old San Mateo Sanitary Landfill in Brgy. Pintong, Bocaue, San Mateo, Rizal. The MOA between EMB and Provincial Government of Rizal on the Joint Monitoring and Implementation of the project was approved. Eight laborers/maintenance staff were hired to continuously maintain the area.

Monthly monitoring was conducted to observe the status of the landfill in preparation for its closure and rehabilitation and to monitor the accomplishments on the downloaded funds for the maintenance activities in the landfill site, particularly on the following parameters: a) top covers; b) surface drainage and erosion control; c) facilities and structures; d) general site requirements; e) maintenance and prohibited activities; and f) surrounding environment. Inventory of equipment and structures were also conducted, such as then field office area; Leachate Treatment Plant; wash bay; electrical/lighting fixtures; and perimeter fence.

Based on the consolidated reports, the total dumpsites in the country increased from 331 in 2019 to 407 in 2020. Compared to the 2019 data, the operational open dumps, closed dumpsites undergoing rehabilitation and closed dumpsites not being rehabilitated were part of the 2020 data including the status of rehabilitation activities supported by the EMB for the existing dumpsites for CY 2016-2018. The above-mentioned challenges of the LGUs resulted in the increase in the number of illegal dumps in their respective regions. The total number of Sanitary Landfills increased from 187 in CY 2019 to 241 in CY 2020.

### Solid Waste Enforcement and Education Program (SWEEP)

The overall accomplishment in the implementation of the Solid Waste Enforcement and Education Program (SWEEP) surpassed the total regional targets for CY 2020.

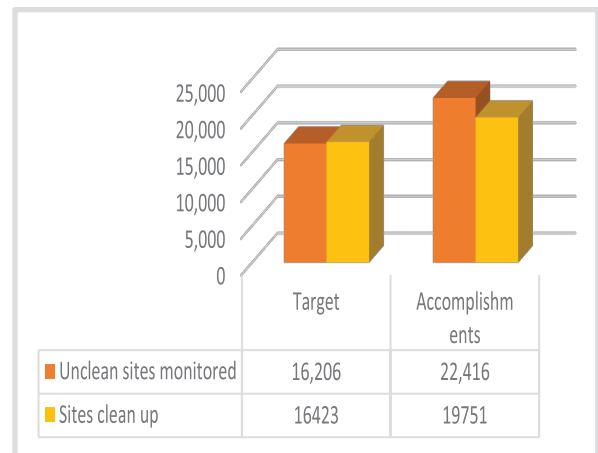


Figure 6.4 Overall accomplishment in the implementation of the Solid Waste Enforcement and Education Program

### Ways Forward

- Provide capacity development to Stakeholders on Alternative Waste Management Technologies
- Increase LGUs compliance in the implementation of RA 9003
- Implement Waste-to-Energy Guidelines
- Monitor all funded MRFs and dumpsite closure and rehabilitation activities

### Proposed Policies in CY 2021

- Development of Guidelines on the Construction and Operation of Residual Containment Area (RCA), Materials Recovery Facility (MRF) and Transfer Stations
- Development of Guidelines on the Clustering of Local Government Units for Common Sanitary Landfill and for Common Waste-to-Energy Facilities.

(Source: EMB 2020 Annual Report)